

DATASHEET

CD43 Rabbit Polyclonal Antibody

CAT. NO. APA13717

KEY FEATURES

| | | | |
|---------------|---|---------------|--------------------|
| Target | CD43 | Source / Host | Rabbit |
| Reactivity | Human, Mouse, Rat | Clonality | Polyclonal |
| Applications | WB, IHC | Conjugation | Unconjugated |
| Form / Buffer | Liquid in 0.42% Potassium phosphate, 0.87% Sodium chloride, pH 7.3, 30% glycerol, and 0.01% sodium azide. | | Storage at-20°C |

BACKGROUND

Predominant cell surface sialoprotein of leukocytes which regulates multiple T-cell functions, including T-cell activation, proliferation, differentiation, trafficking and migration. Positively regulates T-cell trafficking to lymph-nodes via its association with ERM proteins (EZR, RDX and MSN) . Negatively regulates Th2 cell differentiation and predisposes the differentiation of T-cells towards a Th1 lineage commitment. Promotes the expression of IFN-gamma by T-cells during T-cell receptor (TCR) activation of naive cells and induces the expression of IFN-gamma by CD4(+) T-cells and to a lesser extent by CD8(+) T-cells . Negatively regulates Th2 cell differentiation and predisposes the differentiation of T-cells towards a Th1 lineage commitment.

APPLICATION

To ensure optimal assay performance, AREX recommends conducting reagent titration tailored to each testing system for optimal detection results.

| | |
|-----|----------------|
| WB | 1:500 - 1:2000 |
| IHC | 1:50 - 1:200 |

*Results are sample-specific. Please refer to your local assay conditions and test parameters for reference.

PRODUCT OVERVIEW

| | |
|-------------------|---|
| Description | Rabbit polyclonal antibody to CD43 |
| Specificity | Recognizes endogenous levels of CD43 protein. |
| Antibody Type | Primary antibody |
| Immunogen | Recombinant fusion protein of human CD43 |
| Purification | The antibody was purified by immunogen affinity chromatography. |
| Molecular Weight | Predicted: 40 kD; Observed: 40 kD |
| Form/Buffer | Liquid in 0.42% Potassium phosphate, 0.87% Sodium chloride, pH 7.3, 30% glycerol, and 0.01% sodium azide. |
| Alternative Names | CD43; Leukosialin; Galactoglycoprotein; GALGP; Leukocyte sialoglycoprotein; Sialophorin; CD43 |
| Gene Symbol | SPN |
| Entrez Gene | 101929889; 6693(Human) |
| SwissProt | P16150(Human) |

*AREX continuously optimizes our products. Webpage content may not reflect the latest updates. For inquiries, please contact info@arexbio.com or your local distributor.

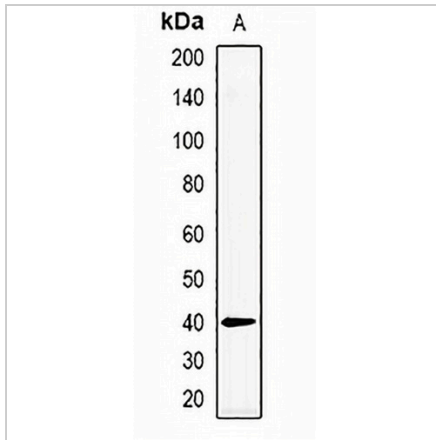
*Clone Number, Reactivity, Source/Host and Clonality can be found in the product name and Key Features section above.

DATASHEET

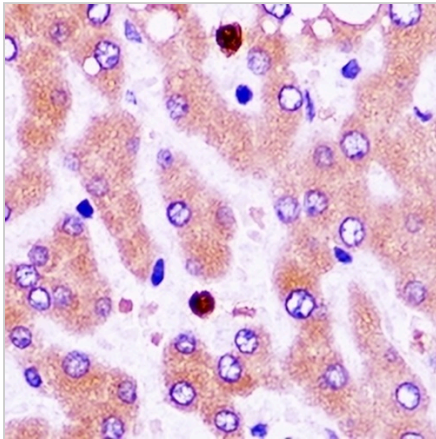
CD43 Rabbit Polyclonal Antibody

CAT. NO. APA13717

DATA



Western blot analysis of CD43 expression in THP1 (A) whole cell lysates. (Predicted band size: 40 kD; Observed band size: 40 kD)



Immunohistochemical analysis of CD43 staining in human liver cancer formalin fixed paraffin embedded tissue section. The section was pre-treated using heat mediated antigen retrieval with sodium citrate buffer (pH 6.0). The section was then incubated with the antibody at room temperature and detected using an HRP conjugated compact polymer system. DAB was used as the chromogen. The section was then counterstained with haematoxylin and mounted with DPX.

STORAGE

Store at 4°C short term. For long term storage, store at -20°C, avoiding freeze/thaw cycles.

NOTE

For Research Use Only. Not for diagnostic, therapeutics, prophylactic or in vivo use.