

DATASHEET

STIP1 Rabbit Polyclonal Antibody

CAT. NO. APA13722

KEY FEATURES

Target	STIP1	Source / Host	Rabbit
Reactivity	Human, Mouse, Rat	Clonality	Polyclonal
Applications	WB, IHC, IF/ICC, IP	Conjugation	Unconjugated
Form / Buffer	Liquid in 0.42% Potassium phosphate, 0.87% Sodium chloride, pH 7.3, 30% glycerol, and 0.01% sodium azide.		Storage at -20°C

BACKGROUND

Acts as a co-chaperone for HSP90AA1 . Mediates the association of the molecular chaperones HSPA8/HSC70 and HSP90 .

APPLICATION

To ensure optimal assay performance, AREX recommends conducting reagent titration tailored to each testing system for optimal detection results.

WB	1:500 - 1:2000
IHC	1:50 - 1:200
IF/ICC	1:50 - 1:200
IP	1:20 - 1:50

*Results are sample-specific. Please refer to your local assay conditions and test parameters for reference.

PRODUCT OVERVIEW

Description	Rabbit polyclonal antibody to STIP1
Specificity	Recognizes endogenous levels of STIP1 protein.
Antibody Type	Primary antibody
Immunogen	Recombinant fusion protein of human STIP1
Purification	The antibody was purified by immunogen affinity chromatography.
Molecular Weight	Predicted: 59; Observed: 63 kD
Form/Buffer	Liquid in 0.42% Potassium phosphate, 0.87% Sodium chloride, pH 7.3, 30% glycerol, and 0.01% sodium azide.
Alternative Names	Stress-induced-phosphoprotein 1; STI1; Hsc70/Hsp90-organizing protein; Hop; Renal carcinoma antigen NY-REN-11; Transformation-sensitive protein IEF SSP 3521
Gene Symbol	STIP1
Entrez Gene	10963(Human); 20867(Mouse); 192277(Rat)
SwissProt	P31948(Human); Q60864(Mouse); O35814(Rat)

*AREX continuously optimizes our products. Webpage content may not reflect the latest updates. For inquiries, please contact info@arexbio.com or your local distributor.

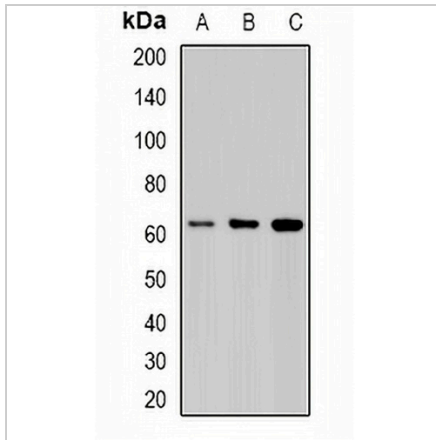
*Clone Number, Reactivity, Source/Host and Clonality can be found in the product name and Key Features section above.

DATASHEET

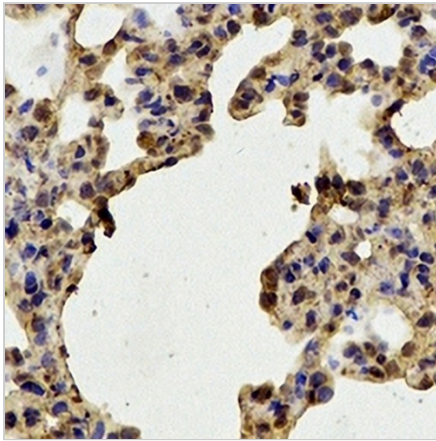
STIP1 Rabbit Polyclonal Antibody

CAT. NO. APA13722

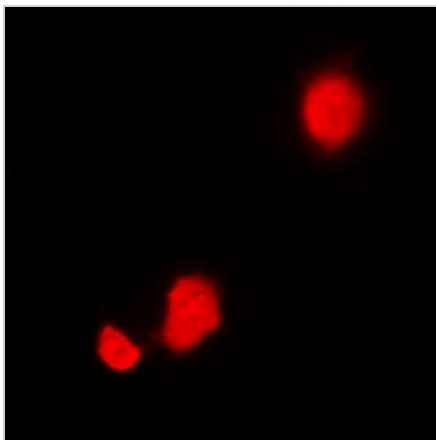
DATA



Western blot analysis of STIP1 expression in Hela (A), COS7 (B), mouse brain (C) whole cell lysates. (Predicted band size: 59; 62; 68 kD; Observed band size: 63 kD)



Immunohistochemical analysis of STIP1 staining in rat lung formalin fixed paraffin embedded tissue section. The section was pre-treated using heat mediated antigen retrieval with sodium citrate buffer (pH 6.0). The section was then incubated with the antibody at room temperature and detected using an HRP conjugated compact polymer system. DAB was used as the chromogen. The section was then counterstained with haematoxylin and mounted with DPX.



Immunofluorescent analysis of STIP1 staining in Hela cells. Formalin-fixed cells were permeabilized with 0.1% Triton X-100 in TBS for 5-10 minutes and blocked with 3% BSA-PBS for 30 minutes at room temperature. Cells were probed with the primary antibody in 3% BSA-PBS and incubated overnight at 4 °C in a humidified chamber. Cells were washed with PBST and incubated with a DyLight 594-conjugated secondary antibody (red) in PBS at room temperature in the dark.

STORAGE

Store at 4°C short term. For long term storage, store at -20°C, avoiding freeze/thaw cycles.

NOTE

For Research Use Only. Not for diagnostic, therapeutics, prophylactic or in vivo use.