

DATASHEET

NDR1 Rabbit Polyclonal Antibody

CAT. NO. APA13723

KEY FEATURES

| | | | |
|---------------|---|---------------|---------------------|
| Target | NDR1 | Source / Host | Rabbit |
| Reactivity | Human, Mouse | Clonality | Polyclonal |
| Applications | WB, IF/ICC | Conjugation | Unconjugated |
| Form / Buffer | Liquid in 0.42% Potassium phosphate, 0.87% Sodium chloride, pH 7.3, 30% glycerol, and 0.01% sodium azide. | | Storage at -20°C |

BACKGROUND

Serine/threonine-protein kinase that acts as a negative regulator of MAP3K1/2 signaling . Converts MAP3K2 from its phosphorylated form to its non-phosphorylated form and inhibits autophosphorylation of MAP3K2 . Acts as an ufmylation 'reader' in a kinase-independent manner: specifically recognizes and binds mono-ufmylated histone H4 in response to DNA damage, promoting the recruitment of SUV39H1 to the double-strand breaks, resulting in ATM activation .

APPLICATION

To ensure optimal assay performance, AREX recommends conducting reagent titration tailored to each testing system for optimal detection results.

| | |
|--------|----------------|
| WB | 1:500 - 1:2000 |
| IF/ICC | 1:50 - 1:200 |

*Results are sample-specific. Please refer to your local assay conditions and test parameters for reference.

PRODUCT OVERVIEW

| | |
|-------------------|---|
| Description | Rabbit polyclonal antibody to NDR1 |
| Specificity | Recognizes endogenous levels of NDR1 protein. |
| Antibody Type | Primary antibody |
| Immunogen | Recombinant fusion protein of human NDR1 |
| Purification | The antibody was purified by immunogen affinity chromatography. |
| Molecular Weight | Predicted: 54 kD; Observed: 62 kD |
| Form/Buffer | Liquid in 0.42% Potassium phosphate, 0.87% Sodium chloride, pH 7.3, 30% glycerol, and 0.01% sodium azide. |
| Alternative Names | NDR1; Serine/threonine-protein kinase 38; NDR1 protein kinase; Nuclear Dbf2-related kinase 1 |
| Gene Symbol | STK38 |
| Entrez Gene | 11329(Human); 106504(Mouse) |
| SwissProt | Q15208(Human); Q91VJ4(Mouse) |

*AREX continuously optimizes our products. Webpage content may not reflect the latest updates. For inquiries, please contact info@arexbio.com or your local distributor.

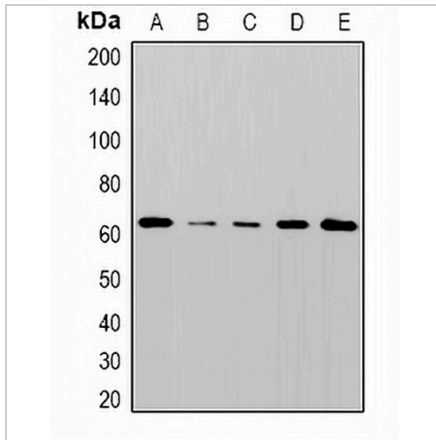
*Clone Number, Reactivity, Source/Host and Clonality can be found in the product name and Key Features section above.

DATASHEET

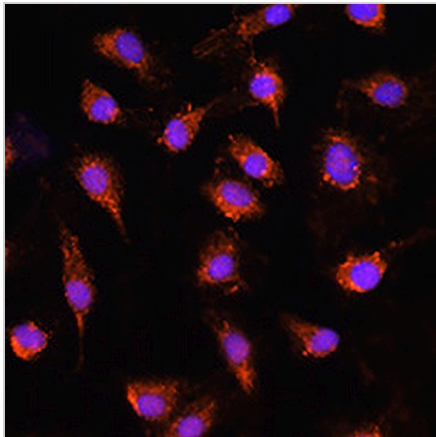
NDR1 Rabbit Polyclonal Antibody

CAT. NO. APA13723

DATA



Western blot analysis of NDR1 expression in A549 (A), SW480 (B), 293T (C), MCF7 (D), mouse liver (E) whole cell lysates. (Predicted band size: 54 kD; Observed band size: 62 kD)



Immunofluorescent analysis of NDR1 staining in L929 cells. Formalin-fixed cells were permeabilized with 0.1% Triton X-100 in TBS for 5-10 minutes and blocked with 3% BSA-PBS for 30 minutes at room temperature. Cells were probed with the primary antibody in 3% BSA-PBS and incubated overnight at 4 °C in a humidified chamber. Cells were washed with PBST and incubated with a AREX® Fluor 594-conjugated secondary antibody (red) in PBS at room temperature in the dark. DAPI was used to stain the cell nuclei (blue).

STORAGE

Store at 4°C short term. For long term storage, store at -20°C, avoiding freeze/thaw cycles.

NOTE

For Research Use Only. Not for diagnostic, therapeutics, prophylactic or in vivo use.