

DATASHEET

SM22 alpha Rabbit Polyclonal Antibody

CAT. NO. APA13728

KEY FEATURES

Target	SM22 alpha	Source / Host	Rabbit
Reactivity	Human, Mouse, Rat	Clonality	Polyclonal
Applications	WB	Conjugation	Unconjugated
Form / Buffer	Liquid in 0.42% Potassium phosphate, 0.87% Sodium chloride, pH 7.3, 30% glycerol, and 0.01% sodium azide.		Storage at -20°C

BACKGROUND

Actin cross-linking/gelling protein . Involved in calcium interactions and contractile properties of the cell that may contribute to replicative senescence.

APPLICATION

To ensure optimal assay performance, AREX recommends conducting reagent titration tailored to each testing system for optimal detection results.

WB	1:500 - 1:1000
----	----------------

*Results are sample-specific. Please refer to your local assay conditions and test parameters for reference.

PRODUCT OVERVIEW

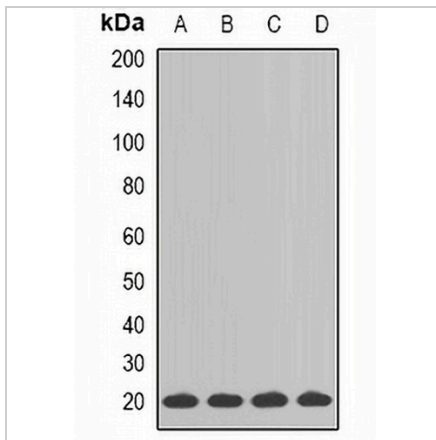
Description	Rabbit polyclonal antibody to SM22 alpha
Specificity	Recognizes endogenous levels of SM22 alpha protein.
Antibody Type	Primary antibody
Immunogen	Recombinant fusion protein of human SM22 alpha
Purification	The antibody was purified by immunogen affinity chromatography.
Molecular Weight	Predicted: 22 kD; Observed: 22 kD
Form/Buffer	Liquid in 0.42% Potassium phosphate, 0.87% Sodium chloride, pH 7.3, 30% glycerol, and 0.01% sodium azide.
Alternative Names	SM22; WS3-10; Transgelin; 22 kDa actin-binding protein; Protein WS3-10; Smooth muscle protein 22-alpha; SM22-alpha
Gene Symbol	TAGLN
Entrez Gene	6876(Human)
SwissProt	Q01995(Human)

*AREX continuously optimizes our products. Webpage content may not reflect the latest updates. For inquiries, please contact info@arexbio.com or your local distributor.

*Clone Number, Reactivity, Source/Host and Clonality can be found in the product name and Key Features section above.

DATASHEET**SM22 alpha Rabbit Polyclonal Antibody**

CAT. NO. APA13728

DATA

Western blot analysis of SM22 alpha expression in HT29 (A), mouse heart (B), mouse kidney (C), rat kidney (D) whole cell lysates. (Predicted band size: 22 kD; Observed band size: 22 kD)

STORAGE

Store at 4°C short term. For long term storage, store at -20°C, avoiding freeze/thaw cycles.

NOTE

For Research Use Only. Not for diagnostic, therapeutics, prophylactic or in vivo use.