

**DATASHEET**

**TAMM41 Rabbit Polyclonal Antibody**

CAT. NO. APA13729

**KEY FEATURES**

Target	TAMM41	Source / Host	Rabbit
Reactivity	Human, Mouse	Clonality	Polyclonal
Applications	WB	Conjugation	Unconjugated
Form / Buffer	Liquid in 0.42% Potassium phosphate, 0.87% Sodium chloride, pH 7.3, 30% glycerol, and 0.01% sodium azide.		Storage at -20°C

**BACKGROUND**

Catalyzes the conversion of phosphatidic acid (PA) to CDP-diacylglycerol (CDP-DAG), an essential intermediate in the synthesis of phosphatidylglycerol, cardiolipin and phosphatidylinositol.

**APPLICATION**

To ensure optimal assay performance, AREX recommends conducting reagent titration tailored to each testing system for optimal detection results.

WB	1:500 - 1:1000
----	----------------

\*Results are sample-specific. Please refer to your local assay conditions and test parameters for reference.

**PRODUCT OVERVIEW**

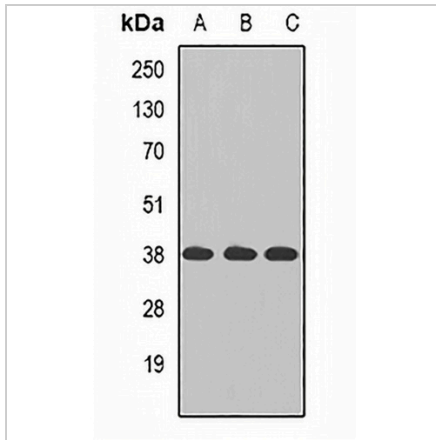
Description	Rabbit polyclonal antibody to TAMM41
Specificity	Recognizes endogenous levels of TAMM41 protein.
Antibody Type	Primary antibody
Immunogen	Recombinant fusion protein of human TAMM41
Purification	The antibody was purified by immunogen affinity chromatography.
Molecular Weight	Predicted: 35; Observed: 38 kD
Form/Buffer	Liquid in 0.42% Potassium phosphate, 0.87% Sodium chloride, pH 7.3, 30% glycerol, and 0.01% sodium azide.
Alternative Names	C3orf31; Mitochondrial translocator assembly and maintenance protein 41 homolog; TAM41; MMP37-like protein mitochondrial
Gene Symbol	TAMM41
Entrez Gene	132001(Human)
SwissProt	Q96BW9(Human)

\*AREX continuously optimizes our products. Webpage content may not reflect the latest updates. For inquiries, please contact [info@arexbio.com](mailto:info@arexbio.com) or your local distributor.

\*Clone Number, Reactivity, Source/Host and Clonality can be found in the product name and Key Features section above.

**DATASHEET****TAMM41 Rabbit Polyclonal Antibody**

CAT. NO. APA13729

**DATA**

Western blot analysis of TAMM41 expression in MCF7 (A), K562 (B), Jurkat (C) whole cell lysates. (Predicted band size: 35; 38; 51 kD; Observed band size: 38 kD)

**STORAGE**

Store at 4°C short term. For long term storage, store at -20°C, avoiding freeze/thaw cycles.

**NOTE**

For Research Use Only. Not for diagnostic, therapeutics, prophylactic or in vivo use.