

## DATASHEET

# TARDBP Rabbit Polyclonal Antibody

CAT. NO. APA13731

### KEY FEATURES

Target	TARDBP	Source / Host	Rabbit
Reactivity	Human, Mouse, Rat	Clonality	Polyclonal
Applications	WB, IP	Conjugation	Unconjugated
Form / Buffer	Liquid in 0.42% Potassium phosphate, 0.87% Sodium chloride, pH 7.3, 30% glycerol, and 0.01% sodium azide.		Storage at -20°C

### BACKGROUND

RNA-binding protein that is involved in various steps of RNA biogenesis and processing . Preferentially binds, via its two RNA recognition motifs RRM1 and RRM2, to GU-repeats on RNA molecules predominantly localized within long introns and in the 3'UTR of mRNAs . In turn, regulates the splicing of many non-coding and protein-coding RNAs including proteins involved in neuronal survival, as well as mRNAs that encode proteins relevant for neurodegenerative diseases . Plays a role in maintaining mitochondrial homeostasis by regulating the processing of mitochondrial transcripts . Also regulates mRNA stability by recruiting CNOT7/CAF1 deadenylase on mRNA 3'UTR leading to poly(A) tail deadenylation and thus shortening .

### APPLICATION

To ensure optimal assay performance, AREX recommends conducting reagent titration tailored to each testing system for optimal detection results.

WB	1:500 - 1:1000
IP	1:10 - 1:50

\*Results are sample-specific. Please refer to your local assay conditions and test parameters for reference.

### PRODUCT OVERVIEW

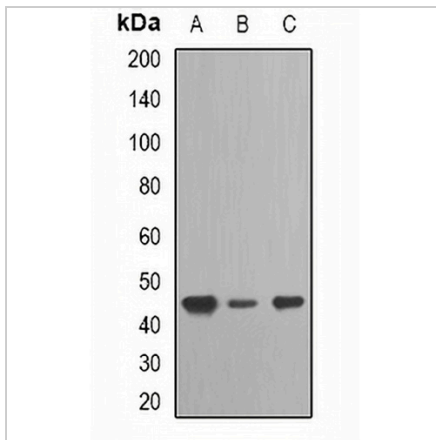
Description	Rabbit polyclonal antibody to TARDBP
Specificity	Recognizes endogenous levels of TARDBP protein.
Antibody Type	Primary antibody
Immunogen	Recombinant fusion protein of human TARDBP
Purification	The antibody was purified by immunogen affinity chromatography.
Molecular Weight	Predicted: 31; Observed: 44 kD
Form/Buffer	Liquid in 0.42% Potassium phosphate, 0.87% Sodium chloride, pH 7.3, 30% glycerol, and 0.01% sodium azide.
Alternative Names	TDP43; TAR DNA-binding protein 43; TDP-43
Gene Symbol	TARDBP
Entrez Gene	23435(Human); 230908(Mouse)
SwissProt	Q13148(Human); Q921F2(Mouse)

\*AREX continuously optimizes our products. Webpage content may not reflect the latest updates. For inquiries, please contact [info@arexbio.com](mailto:info@arexbio.com) or your local distributor.

\*Clone Number, Reactivity, Source/Host and Clonality can be found in the product name and Key Features section above.

**DATASHEET****TARDBP Rabbit Polyclonal Antibody**

CAT. NO. APA13731

**DATA****STORAGE**

Store at 4°C short term. For long term storage, store at -20°C, avoiding freeze/thaw cycles.

**NOTE**

For Research Use Only. Not for diagnostic, therapeutics, prophylactic or in vivo use.