

**DATASHEET**

**LACI Rabbit Polyclonal Antibody**

CAT. NO. APA13734

**KEY FEATURES**

Target	LACI	Source / Host	Rabbit
Reactivity	Human, Mouse, Rat	Clonality	Polyclonal
Applications	WB	Conjugation	Unconjugated
Form / Buffer	Liquid in 0.42% Potassium phosphate, 0.87% Sodium chloride, pH 7.3, 30% glycerol, and 0.01% sodium azide.		Storage at -20°C

**BACKGROUND**

Inhibits factor X (X(a)) directly and, in a Xa-dependent way, inhibits VIIa/tissue factor activity, presumably by forming a quaternary Xa/LACI/VIIa/TF complex. It possesses an antithrombotic action and also the ability to associate with lipoproteins in plasma.

**APPLICATION**

To ensure optimal assay performance, AREX recommends conducting reagent titration tailored to each testing system for optimal detection results.

WB	1:500 - 1:1000
----	----------------

\*Results are sample-specific. Please refer to your local assay conditions and test parameters for reference.

**PRODUCT OVERVIEW**

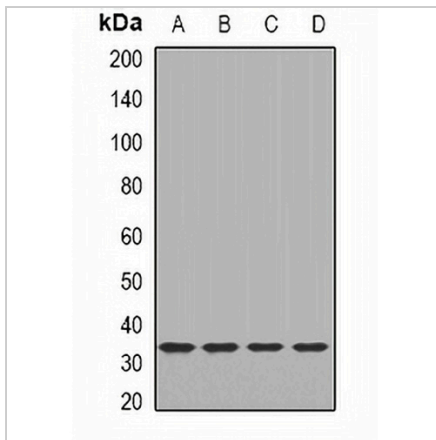
Description	Rabbit polyclonal antibody to LACI
Specificity	Recognizes endogenous levels of LACI protein.
Antibody Type	Primary antibody
Immunogen	Recombinant fusion protein of human LACI
Purification	The antibody was purified by immunogen affinity chromatography.
Molecular Weight	Predicted: 28; Observed: 31 kD
Form/Buffer	Liquid in 0.42% Potassium phosphate, 0.87% Sodium chloride, pH 7.3, 30% glycerol, and 0.01% sodium azide.
Alternative Names	LACI; TFP11; Tissue factor pathway inhibitor; TFPI; Extrinsic pathway inhibitor; EPI; Lipoprotein-associated coagulation inhibitor; LACI
Gene Symbol	TFPI
Entrez Gene	7035(Human); 21788(Mouse); 29436(Rat)
SwissProt	P10646(Human); O54819(Mouse); Q02445(Rat)

\*AREX continuously optimizes our products. Webpage content may not reflect the latest updates. For inquiries, please contact [info@arexbio.com](mailto:info@arexbio.com) or your local distributor.

\*Clone Number, Reactivity, Source/Host and Clonality can be found in the product name and Key Features section above.

**DATASHEET****LACI Rabbit Polyclonal Antibody**

CAT. NO. APA13734

**DATA**

Western blot analysis of LACI expression in HEK293T (A), MCF7 (B), mouse lung (C), mouse heart (D) whole cell lysates. (Predicted band size: 28; 35 kD; Observed band size: 31 kD)

**STORAGE**

Store at 4°C short term. For long term storage, store at -20°C, avoiding freeze/thaw cycles.

**NOTE**

For Research Use Only. Not for diagnostic, therapeutics, prophylactic or in vivo use.