

DATASHEET

Thymopoietin Rabbit Polyclonal Antibody

CAT. NO. APA13740

KEY FEATURES

Target	Thymopoietin	Source / Host	Rabbit
Reactivity	Human, Mouse	Clonality	Polyclonal
Applications	WB, IHC, IF/ICC	Conjugation	Unconjugated
Form / Buffer	Liquid in 0.42% Potassium phosphate, 0.87% Sodium chloride, pH 7.3, 30% glycerol, and 0.01% sodium azide.		Storage at-20°C

BACKGROUND

May be involved in the structural organization of the nucleus and in the post-mitotic nuclear assembly. Plays an important role, together with LMNA, in the nuclear anchorage of RB1.; TP and TP5 may play a role in T-cell development and function. TP5 is an immunomodulating pentapeptide.

APPLICATION

To ensure optimal assay performance, AREX recommends conducting reagent titration tailored to each testing system for optimal detection results.

WB	1:500 - 1:2000
IHC	1:50 - 1:200
IF/ICC	1:50 - 1:200

*Results are sample-specific. Please refer to your local assay conditions and test parameters for reference.

PRODUCT OVERVIEW

Description	Rabbit polyclonal antibody to Thymopoietin
Specificity	Recognizes endogenous levels of Thymopoietin protein.
Antibody Type	Primary antibody
Immunogen	Recombinant fusion protein of human Thymopoietin
Purification	The antibody was purified by immunogen affinity chromatography.
Molecular Weight	Predicted: 38; Observed: 50; 75 kD
Form/Buffer	Liquid in 0.42% Potassium phosphate, 0.87% Sodium chloride, pH 7.3, 30% glycerol, and 0.01% sodium azide.
Alternative Names	LAP2; Lamina-associated polypeptide 2, isoform alpha; Thymopoietin isoform alpha; TP alpha; Thymopoietin-related peptide isoform alpha; TPRP isoform alpha
Gene Symbol	TMPO
Entrez Gene	7112(Human); 21917(Mouse)
SwissProt	P42166(Human); Q61033(Mouse)

*AREX continuously optimizes our products. Webpage content may not reflect the latest updates. For inquiries, please contact info@arexbio.com or your local distributor.

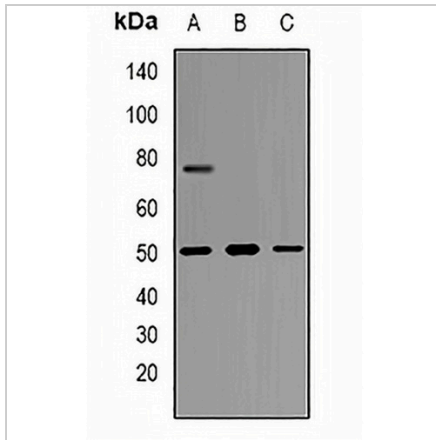
*Clone Number, Reactivity, Source/Host and Clonality can be found in the product name and Key Features section above.

DATASHEET

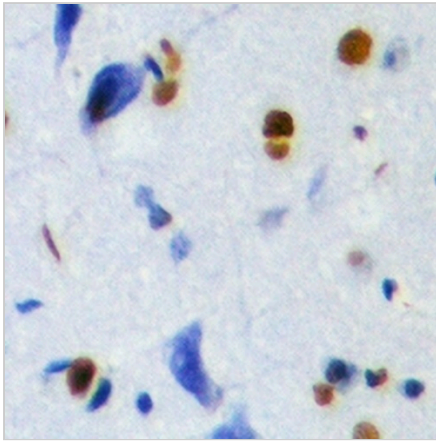
Thymopoietin Rabbit Polyclonal Antibody

CAT. NO. APA13740

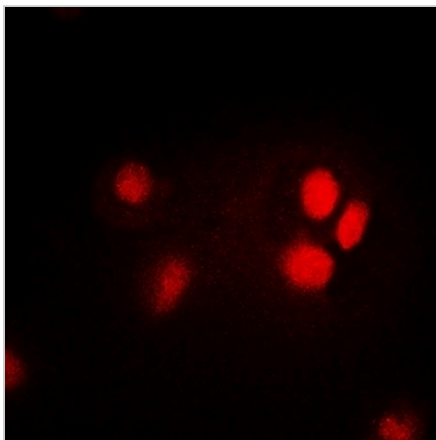
DATA



Western blot analysis of Thymopoietin expression in K562 (A), HepG2 (B), SHSY5Y (C) whole cell lysates. (Predicted band size: 38; 50; 75 kD; Observed band size: 50; 75 kD)



Immunohistochemical analysis of Thymopoietin staining in rat brain formalin fixed paraffin embedded tissue section. The section was pre-treated using heat mediated antigen retrieval with sodium citrate buffer (pH 6.0). The section was then incubated with the antibody at room temperature and detected using an HRP conjugated compact polymer system. DAB was used as the chromogen. The section was then counterstained with haematoxylin and mounted with DPX.



Immunofluorescent analysis of Thymopoietin staining in HepG2 cells. Formalin-fixed cells were permeabilized with 0.1% Triton X-100 in TBS for 5-10 minutes and blocked with 3% BSA-PBS for 30 minutes at room temperature. Cells were probed with the primary antibody in 3% BSA-PBS and incubated overnight at 4 °C in a humidified chamber. Cells were washed with PBST and incubated with a DyLight 594-conjugated secondary antibody (red) in PBS at room temperature in the dark.

STORAGE

Store at 4°C short term. For long term storage, store at -20°C, avoiding freeze/thaw cycles.

NOTE

For Research Use Only. Not for diagnostic, therapeutics, prophylactic or in vivo use.