

DATASHEET

CD30 Rabbit Polyclonal Antibody

CAT. NO. APA13742

KEY FEATURES

Target	CD30	Source / Host	Rabbit
Reactivity	Human	Clonality	Polyclonal
Applications	WB	Conjugation	Unconjugated
Form / Buffer	Liquid in 0.42% Potassium phosphate, 0.87% Sodium chloride, pH 7.3, 30% glycerol, and 0.01% sodium azide.		Storage at -20°C

BACKGROUND

Receptor for TNFSF8/CD30L . May play a role in the regulation of cellular growth and transformation of activated lymphoblasts. Regulates gene expression through activation of NF-kappa-B .

APPLICATION

To ensure optimal assay performance, AREX recommends conducting reagent titration tailored to each testing system for optimal detection results.

WB	1:500 - 1:2000
----	----------------

*Results are sample-specific. Please refer to your local assay conditions and test parameters for reference.

PRODUCT OVERVIEW

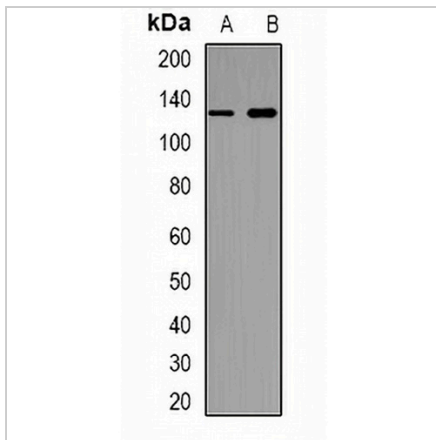
Description	Rabbit polyclonal antibody to CD30
Specificity	Recognizes endogenous levels of CD30 protein.
Antibody Type	Primary antibody
Immunogen	KLH-conjugated synthetic peptide of human CD30
Purification	The antibody was purified by immunogen affinity chromatography.
Molecular Weight	Predicted: 14; Observed: 128 kD
Form/Buffer	Liquid in 0.42% Potassium phosphate, 0.87% Sodium chloride, pH 7.3, 30% glycerol, and 0.01% sodium azide.
Alternative Names	CD30; D1S166E; Tumor necrosis factor receptor superfamily member 8; CD30L receptor; Ki-1 antigen; Lymphocyte activation antigen CD30; CD30
Gene Symbol	TNFRSF8
Entrez Gene	943(Human)
SwissProt	P28908(Human)

*AREX continuously optimizes our products. Webpage content may not reflect the latest updates. For inquiries, please contact info@arexbio.com or your local distributor.

*Clone Number, Reactivity, Source/Host and Clonality can be found in the product name and Key Features section above.

DATASHEET**CD30 Rabbit Polyclonal Antibody**

CAT. NO. APA13742

DATA

Western blot analysis of CD30 expression in HeLa (A), Jurkat (B) whole cell lysates.
(Predicted band size: 14; 50; 63 kD; Observed band size: 128 kD)

STORAGE

Store at 4°C short term. For long term storage, store at -20°C, avoiding freeze/thaw cycles.

NOTE

For Research Use Only. Not for diagnostic, therapeutics, prophylactic or in vivo use.