

**DATASHEET**
**Tropomyosin Rabbit Polyclonal Antibody**
**CAT. NO. APA13745**
**KEY FEATURES**

Target	Tropomyosin	Source / Host	Rabbit
Reactivity	Human, Mouse, Rat	Clonality	Polyclonal
Applications	WB, IF/ICC	Conjugation	Unconjugated
Form / Buffer	Liquid in 0.42% Potassium phosphate, 0.87% Sodium chloride, pH 7.3, 30% glycerol, and 0.01% sodium azide.		Storage at -20°C

**BACKGROUND**

Binds to actin filaments in muscle and non-muscle cells . Plays a central role, in association with the troponin complex, in the calcium dependent regulation of vertebrate striated muscle contraction . Smooth muscle contraction is regulated by interaction with caldesmon. In non-muscle cells is implicated in stabilizing cytoskeleton actin filaments.

**APPLICATION**

To ensure optimal assay performance, AREX recommends conducting reagent titration tailored to each testing system for optimal detection results.

WB	1:500 - 1:1000
IF/ICC	1:50 - 1:200

\*Results are sample-specific. Please refer to your local assay conditions and test parameters for reference.

**PRODUCT OVERVIEW**

Description	Rabbit polyclonal antibody to Tropomyosin
Specificity	Recognizes endogenous levels of Tropomyosin protein.
Antibody Type	Primary antibody
Immunogen	Recombinant fusion protein of human Tropomyosin
Purification	The antibody was purified by immunogen affinity chromatography.
Molecular Weight	Predicted: 26; Observed: 36 kD
Form/Buffer	Liquid in 0.42% Potassium phosphate, 0.87% Sodium chloride, pH 7.3, 30% glycerol, and 0.01% sodium azide.
Alternative Names	C15orf13; TMSA; Tropomyosin alpha-1 chain; Alpha-tropomyosin; Tropomyosin-1
Gene Symbol	TPM1
Entrez Gene	7168(Human); 22003(Mouse); 24851(Rat)
SwissProt	P09493(Human); P58771(Mouse); P04692(Rat)

\*AREX continuously optimizes our products. Webpage content may not reflect the latest updates. For inquiries, please contact [info@arexbio.com](mailto:info@arexbio.com) or your local distributor.

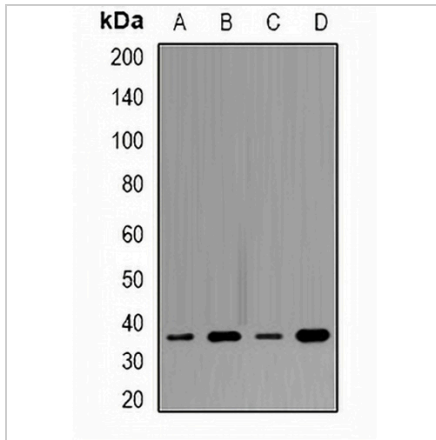
\*Clone Number, Reactivity, Source/Host and Clonality can be found in the product name and Key Features section above.

**DATASHEET**

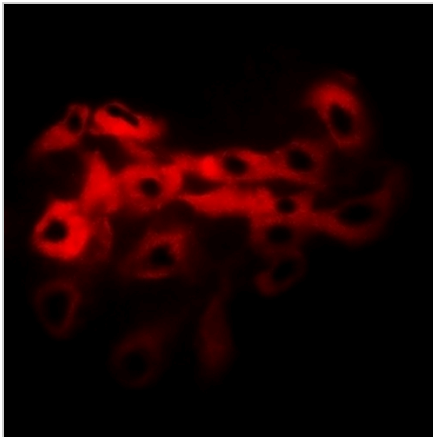
**Tropomyosin Rabbit Polyclonal Antibody**

CAT. NO. APA13745

**DATA**



Western blot analysis of Tropomyosin expression in SW480 (A), MCF7 (B), mouse heart (C), mouse brain (D) whole cell lysates. (Predicted band size: 26; 28; 32 kD; Observed band size: 36 kD)



Immunofluorescent analysis of Tropomyosin staining in HeLa cells. Formalin-fixed cells were permeabilized with 0.1% Triton X-100 in TBS for 5-10 minutes and blocked with 3% BSA-PBS for 30 minutes at room temperature. Cells were probed with the primary antibody in 3% BSA-PBS and incubated overnight at 4 °C in a humidified chamber. Cells were washed with PBST and incubated with a DyLight 594-conjugated secondary antibody (red) in PBS at room temperature in the dark.

**STORAGE**

Store at 4°C short term. For long term storage, store at -20°C, avoiding freeze/thaw cycles.

**NOTE**

For Research Use Only. Not for diagnostic, therapeutics, prophylactic or in vivo use.