

DATASHEET

CLN2 Rabbit Polyclonal Antibody

CAT. NO. APA13746

KEY FEATURES

Target	CLN2	Source / Host	Rabbit
Reactivity	Human, Mouse, Rat	Clonality	Polyclonal
Applications	WB	Conjugation	Unconjugated
Form / Buffer	Liquid in 0.42% Potassium phosphate, 0.87% Sodium chloride, pH 7.3, 30% glycerol, and 0.01% sodium azide.		Storage at-20°C

BACKGROUND

Lysosomal serine protease with tripeptidyl-peptidase I activity . May act as a non-specific lysosomal peptidase which generates tripeptides from the breakdown products produced by lysosomal proteinases . Requires substrates with an unsubstituted N-terminus .

APPLICATION

To ensure optimal assay performance, AREX recommends conducting reagent titration tailored to each testing system for optimal detection results.

WB	1:500 - 1:2000
----	----------------

*Results are sample-specific. Please refer to your local assay conditions and test parameters for reference.

PRODUCT OVERVIEW

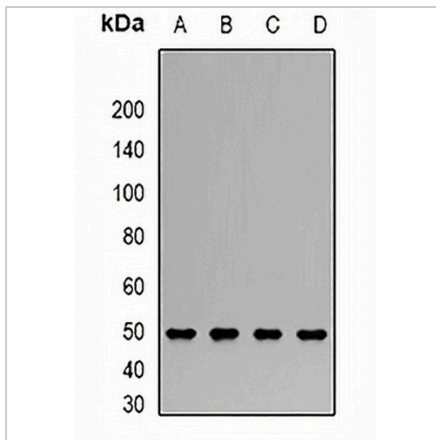
Description	Rabbit polyclonal antibody to CLN2
Specificity	Recognizes endogenous levels of CLN2 protein.
Antibody Type	Primary antibody
Immunogen	Recombinant fusion protein of human CLN2
Purification	The antibody was purified by immunogen affinity chromatography.
Molecular Weight	Predicted: 34; Observed: 50 kD
Form/Buffer	Liquid in 0.42% Potassium phosphate, 0.87% Sodium chloride, pH 7.3, 30% glycerol, and 0.01% sodium azide.
Alternative Names	CLN2; Tripeptidyl-peptidase 1; TPP-1; Cell growth-inhibiting gene 1 protein; Lysosomal pepstatin-insensitive protease; LPIC; Tripeptidyl aminopeptidase; Tripeptidyl-peptidase I; TPP-I
Gene Symbol	TPP1
Entrez Gene	1200(Human); 12751(Mouse); 83534(Rat)
SwissProt	O14773(Human); O89023(Mouse); Q9EQV6(Rat)

*AREX continuously optimizes our products. Webpage content may not reflect the latest updates. For inquiries, please contact info@arexbio.com or your local distributor.

*Clone Number, Reactivity, Source/Host and Clonality can be found in the product name and Key Features section above.

DATASHEET**CLN2 Rabbit Polyclonal Antibody**

CAT. NO. APA13746

DATA

Western blot analysis of CLN2 expression in SW480 (A), SKOV3 (B), HepG2 (C), mouse ovary (D) whole cell lysates. (Predicted band size: 34; 61 kD; Observed band size: 50 kD)

STORAGE

Store at 4°C short term. For long term storage, store at -20°C, avoiding freeze/thaw cycles.

NOTE

For Research Use Only. Not for diagnostic, therapeutics, prophylactic or in vivo use.