

**DATASHEET**

**TRAF2 Rabbit Polyclonal Antibody**

CAT. NO. APA13747

**KEY FEATURES**

Target	TRAF2	Source / Host	Rabbit
Reactivity	Human, Mouse, Rat	Clonality	Polyclonal
Applications	WB, IHC, IP	Conjugation	Unconjugated
Form / Buffer	Liquid in 0.42% Potassium phosphate, 0.87% Sodium chloride, pH 7.3, 30% glycerol, and 0.01% sodium azide.		Storage at -20°C

**BACKGROUND**

E3 ubiquitin-protein ligase that regulates activation of NF-kappa-B and JNK and plays a central role in the regulation of cell survival and apoptosis . Catalyzes 'Lys-63'-linked ubiquitination of target proteins, such as BIRC3, IKBKE, MLST8, RIPK1 and TICAM1 . Is an essential constituent of several E3 ubiquitin-protein ligase complexes, where it promotes the ubiquitination of target proteins by bringing them into contact with other E3 ubiquitin ligases . Regulates BIRC2 and BIRC3 protein levels by inhibiting their autoubiquitination and subsequent degradation; this does not depend on the TRAF2 RING-type zinc finger domain . Plays a role in mediating activation of NF-kappa-B by EIF2AK2/PKR . In complex with BIRC2 or BIRC3, promotes ubiquitination of IKBKE .

**APPLICATION**

To ensure optimal assay performance, AREX recommends conducting reagent titration tailored to each testing system for optimal detection results.

WB	1:500 - 1:1000
IHC	1:50 - 1:200
IP	1:10 - 1:50

\*Results are sample-specific. Please refer to your local assay conditions and test parameters for reference.

**PRODUCT OVERVIEW**

Description	Rabbit polyclonal antibody to TRAF2
Specificity	Recognizes endogenous levels of TRAF2 protein.
Antibody Type	Primary antibody
Immunogen	Recombinant fusion protein of human TRAF2
Purification	The antibody was purified by immunogen affinity chromatography.
Molecular Weight	Predicted: 53; Observed: 54 kD
Form/Buffer	Liquid in 0.42% Potassium phosphate, 0.87% Sodium chloride, pH 7.3, 30% glycerol, and 0.01% sodium azide.
Alternative Names	TRAP3; TNF receptor-associated factor 2; E3 ubiquitin-protein ligase TRAF2; Tumor necrosis factor type 2 receptor-associated protein 3
Gene Symbol	TRAF2
Entrez Gene	7186(Human); 22030(Mouse)
SwissProt	Q12933(Human); P39429(Mouse)

\*AREX continuously optimizes our products. Webpage content may not reflect the latest updates. For inquiries, please contact [info@arexbio.com](mailto:info@arexbio.com) or your local distributor.

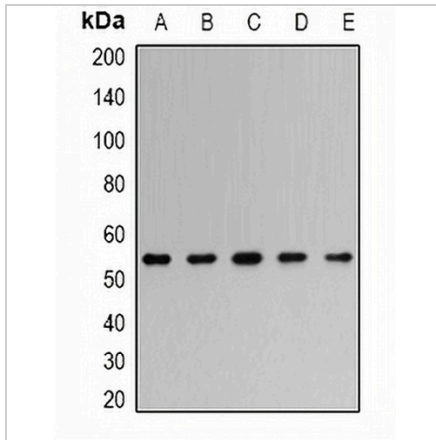
\*Clone Number, Reactivity, Source/Host and Clonality can be found in the product name and Key Features section above.

**DATASHEET**

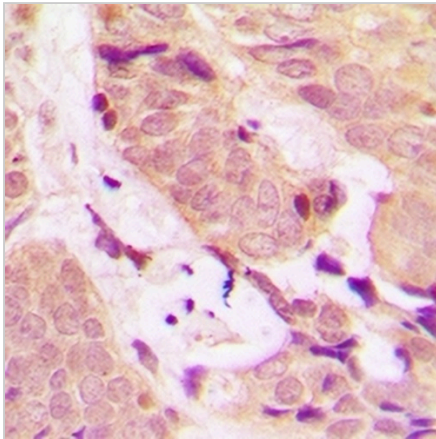
**TRAF2 Rabbit Polyclonal Antibody**

CAT. NO. APA13747

**DATA**



Western blot analysis of TRAF2 expression in HeLa (A), PC12 (B), Romas (C), Jurkat (D), NIH3T3 (E) whole cell lysates. (Predicted band size: 53; 54; 55; 61 kD; Observed band size: 54 kD)



Immunohistochemical analysis of TRAF2 staining in human colon cancer formalin fixed paraffin embedded tissue section. The section was pre-treated using heat mediated antigen retrieval with sodium citrate buffer (pH 6.0). The section was then incubated with the antibody at room temperature and detected using an HRP conjugated compact polymer system. DAB was used as the chromogen. The section was then counterstained with haematoxylin and mounted with DPX.

**STORAGE**

Store at 4°C short term. For long term storage, store at -20°C, avoiding freeze/thaw cycles.

**NOTE**

For Research Use Only. Not for diagnostic, therapeutics, prophylactic or in vivo use.