

## DATASHEET

# ERp46 Rabbit Polyclonal Antibody

CAT. NO. APA13756

### KEY FEATURES

Target	ERp46	Source / Host	Rabbit
Reactivity	Human	Clonality	Polyclonal
Applications	WB	Conjugation	Unconjugated
Form / Buffer	Liquid in 0.42% Potassium phosphate, 0.87% Sodium chloride, pH 7.3, 30% glycerol, and 0.01% sodium azide.		Storage at -20°C

### BACKGROUND

Protein disulfide isomerase of the endoplasmic reticulum lumen involved in the formation of disulfide bonds in proteins. Can reduce insulin disulfide bonds.

### APPLICATION

To ensure optimal assay performance, AREX recommends conducting reagent titration tailored to each testing system for optimal detection results.

WB	1:500 - 1:1000
----	----------------

\*Results are sample-specific. Please refer to your local assay conditions and test parameters for reference.

### PRODUCT OVERVIEW

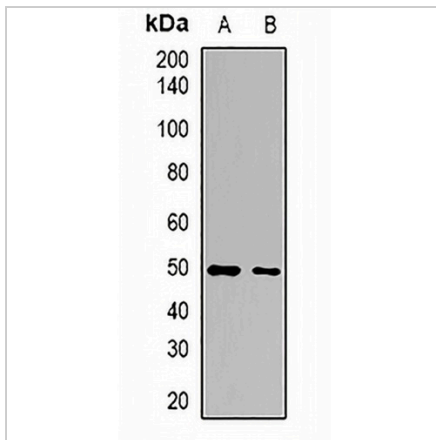
Description	Rabbit polyclonal antibody to ERp46
Specificity	Recognizes endogenous levels of ERp46 protein.
Antibody Type	Primary antibody
Immunogen	Recombinant fusion protein of human ERp46
Purification	The antibody was purified by immunogen affinity chromatography.
Molecular Weight	Predicted: 47 kD; Observed: 48 kD
Form/Buffer	Liquid in 0.42% Potassium phosphate, 0.87% Sodium chloride, pH 7.3, 30% glycerol, and 0.01% sodium azide.
Alternative Names	TLP46; Thioredoxin domain-containing protein 5; Endoplasmic reticulum resident protein 46; ER protein 46; ERp46; Thioredoxin-like protein p46
Gene Symbol	TXNDC5
Entrez Gene	81567(Human)
SwissProt	Q8NBS9(Human)

\*AREX continuously optimizes our products. Webpage content may not reflect the latest updates. For inquiries, please contact [info@arexbio.com](mailto:info@arexbio.com) or your local distributor.

\*Clone Number, Reactivity, Source/Host and Clonality can be found in the product name and Key Features section above.

**DATASHEET****ERp46 Rabbit Polyclonal Antibody**

CAT. NO. APA13756

**DATA**

Western blot analysis of ERp46 expression in HepG2 (A), H460 (B) whole cell lysates. (Predicted band size: 47 kD; Observed band size: 48 kD)

**STORAGE**

Store at 4°C short term. For long term storage, store at -20°C, avoiding freeze/thaw cycles.

**NOTE**

For Research Use Only. Not for diagnostic, therapeutics, prophylactic or in vivo use.