

DATASHEET

Thymidine Phosphorylase Rabbit Polyclonal Antibody

CAT. NO. APA13757

KEY FEATURES

Target	Thymidine Phosphorylase	Source / Host	Rabbit
Reactivity	Human	Clonality	Polyclonal
Applications	WB, IHC	Conjugation	Unconjugated
Form / Buffer	Liquid in 0.42% Potassium phosphate, 0.87% Sodium chloride, pH 7.3, 30% glycerol, and 0.01% sodium azide.		Storage at -20°C

BACKGROUND

May have a role in maintaining the integrity of the blood vessels. Has growth promoting activity on endothelial cells, angiogenic activity in vivo and chemotactic activity on endothelial cells in vitro.

APPLICATION

To ensure optimal assay performance, AREX recommends conducting reagent titration tailored to each testing system for optimal detection results.

WB	1:500 - 1:1000
IHC	1:50 - 1:200

*Results are sample-specific. Please refer to your local assay conditions and test parameters for reference.

PRODUCT OVERVIEW

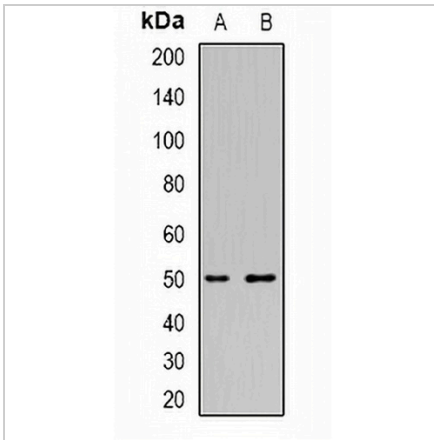
Description	Rabbit polyclonal antibody to Thymidine Phosphorylase
Specificity	Recognizes endogenous levels of Thymidine Phosphorylase protein.
Antibody Type	Primary antibody
Immunogen	Recombinant fusion protein of human Thymidine Phosphorylase
Purification	The antibody was purified by immunogen affinity chromatography.
Molecular Weight	Predicted: 49; Observed: 50 kD
Form/Buffer	Liquid in 0.42% Potassium phosphate, 0.87% Sodium chloride, pH 7.3, 30% glycerol, and 0.01% sodium azide.
Alternative Names	ECGF1; Thymidine phosphorylase; TP; Gliostatin; Platelet-derived endothelial cell growth factor; PD-ECGF; TdRPase
Gene Symbol	TYMP
Entrez Gene	1890(Human)
SwissProt	P19971(Human)

*AREX continuously optimizes our products. Webpage content may not reflect the latest updates. For inquiries, please contact info@arexbio.com or your local distributor.

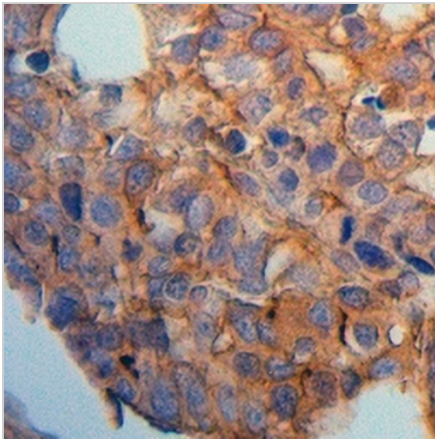
*Clone Number, Reactivity, Source/Host and Clonality can be found in the product name and Key Features section above.

DATASHEET**Thymidine Phosphorylase Rabbit Polyclonal Antibody**

CAT. NO. APA13757

DATA

Western blot analysis of Thymidine Phosphorylase expression in A549 (A), THP1 (B) whole cell lysates. (Predicted band size: 49; 50 kD; Observed band size: 50 kD)



Immunohistochemical analysis of Thymidine Phosphorylase staining in human liver cancer formalin fixed paraffin embedded tissue section. The section was pre-treated using heat mediated antigen retrieval with sodium citrate buffer (pH 6.0). The section was then incubated with the antibody at room temperature and detected using an HRP conjugated compact polymer system. DAB was used as the chromogen. The section was then counterstained with haematoxylin and mounted with DPX.

STORAGE

Store at 4°C short term. For long term storage, store at -20°C, avoiding freeze/thaw cycles.

NOTE

For Research Use Only. Not for diagnostic, therapeutics, prophylactic or in vivo use.