

## DATASHEET

# UBE2D4 Rabbit Polyclonal Antibody

CAT. NO. APA13761

### KEY FEATURES

Target	UBE2D4	Source / Host	Rabbit
Reactivity	Human, Mouse, Rat	Clonality	Polyclonal
Applications	WB	Conjugation	Unconjugated
Form / Buffer	Liquid in 0.42% Potassium phosphate, 0.87% Sodium chloride, pH 7.3, 30% glycerol, and 0.01% sodium azide.	Storage	at-20°C

### BACKGROUND

Accepts ubiquitin from the E1 complex and catalyzes its covalent attachment to other proteins. In vitro able to promote polyubiquitination using all 7 ubiquitin Lys residues, but may prefer 'Lys-11' and 'Lys-48'-linked polyubiquitination.

### APPLICATION

To ensure optimal assay performance, AREX recommends conducting reagent titration tailored to each testing system for optimal detection results.

WB	1:500 - 1:2000
----	----------------

\*Results are sample-specific. Please refer to your local assay conditions and test parameters for reference.

### PRODUCT OVERVIEW

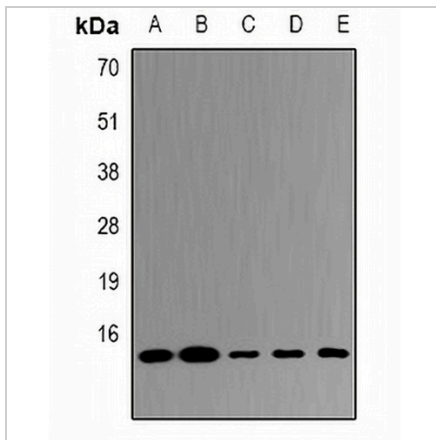
Description	Rabbit polyclonal antibody to UBE2D4
Specificity	Recognizes endogenous levels of UBE2D4 protein.
Antibody Type	Primary antibody
Immunogen	Recombinant fusion protein of human UBE2D4
Purification	The antibody was purified by immunogen affinity chromatography.
Molecular Weight	Predicted: 16 kD; Observed: 16 kD
Form/Buffer	Liquid in 0.42% Potassium phosphate, 0.87% Sodium chloride, pH 7.3, 30% glycerol, and 0.01% sodium azide.
Alternative Names	UBCH5D; Ubiquitin-conjugating enzyme E2 D4; HBUCE1; Ubiquitin carrier protein D4; Ubiquitin-protein ligase D4
Gene Symbol	UBE2D4
Entrez Gene	51619(Human)
SwissProt	Q9Y2X8(Human)

\*AREX continuously optimizes our products. Webpage content may not reflect the latest updates. For inquiries, please contact [info@arexbio.com](mailto:info@arexbio.com) or your local distributor.

\*Clone Number, Reactivity, Source/Host and Clonality can be found in the product name and Key Features section above.

**DATASHEET****UBE2D4 Rabbit Polyclonal Antibody**

CAT. NO. APA13761

**DATA**

Western blot analysis of UBE2D4 expression in HepG2 (A), MCF7 (B), mouse liver (C), mouse kidney (D), rat lung (E) whole cell lysates. (Predicted band size: 16 kD; Observed band size: 16 kD)

**STORAGE**

Store at 4°C short term. For long term storage, store at -20°C, avoiding freeze/thaw cycles.

**NOTE**

For Research Use Only. Not for diagnostic, therapeutics, prophylactic or in vivo use.