

DATASHEET

UBE2H Rabbit Polyclonal Antibody

CAT. NO. APA13762

KEY FEATURES

Target	UBE2H	Source / Host	Rabbit
Reactivity	Human, Mouse, Rat	Clonality	Polyclonal
Applications	WB	Conjugation	Unconjugated
Form / Buffer	Liquid in 0.42% Potassium phosphate, 0.87% Sodium chloride, pH 7.3, 30% glycerol, and 0.01% sodium azide.		Storage at -20°C

BACKGROUND

Accepts ubiquitin from the E1 complex and catalyzes its covalent attachment to other proteins. E2 ubiquitin conjugating enzyme that transfers ubiquitin to MAEA, a core component of the CTLH E3 ubiquitin-protein ligase complex. In vitro catalyzes 'Lys-11'- and 'Lys-48'-linked polyubiquitination. Capable, in vitro, to ubiquitinate histone H2A.

APPLICATION

To ensure optimal assay performance, AREX recommends conducting reagent titration tailored to each testing system for optimal detection results.

WB	1:500 - 1:1000
----	----------------

*Results are sample-specific. Please refer to your local assay conditions and test parameters for reference.

PRODUCT OVERVIEW

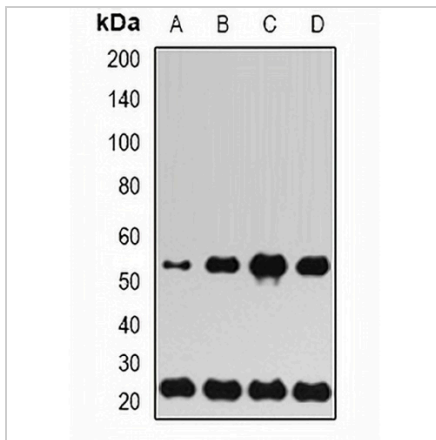
Description	Rabbit polyclonal antibody to UBE2H
Specificity	Recognizes endogenous levels of UBE2H protein.
Antibody Type	Primary antibody
Immunogen	Recombinant fusion protein of human UBE2H
Purification	The antibody was purified by immunogen affinity chromatography.
Molecular Weight	Predicted: 17; Observed: 21-50 kD
Form/Buffer	Liquid in 0.42% Potassium phosphate, 0.87% Sodium chloride, pH 7.3, 30% glycerol, and 0.01% sodium azide.
Alternative Names	Ubiquitin-conjugating enzyme E2 H; UbcH2; Ubiquitin carrier protein H; Ubiquitin-conjugating enzyme E2-20K; Ubiquitin-protein ligase H
Gene Symbol	UBE2H
Entrez Gene	7328(Human); 22214(Mouse)
SwissProt	P62256(Human); P62257(Mouse)

*AREX continuously optimizes our products. Webpage content may not reflect the latest updates. For inquiries, please contact info@arexbio.com or your local distributor.

*Clone Number, Reactivity, Source/Host and Clonality can be found in the product name and Key Features section above.

DATASHEET**UBE2H Rabbit Polyclonal Antibody**

CAT. NO. APA13762

DATA

Western blot analysis of UBE2H expression in SW480 (A), SKOV3 (B), mouse liver (C), rat lung (D) whole cell lysates. (Predicted band size: 17; 20 kD; Observed band size: 21-50 kD)

STORAGE

Store at 4°C short term. For long term storage, store at -20°C, avoiding freeze/thaw cycles.

NOTE

For Research Use Only. Not for diagnostic, therapeutics, prophylactic or in vivo use.