

**DATASHEET**

**NHERF1 Rabbit Polyclonal Antibody**

CAT. NO. APA13788

**KEY FEATURES**

Target	NHERF1	Source / Host	Rabbit
Reactivity	Human, Mouse, Rat	Clonality	Polyclonal
Applications	WB	Conjugation	Unconjugated
Form / Buffer	Liquid in 0.42% Potassium phosphate, 0.87% Sodium chloride, pH 7.3, 30% glycerol, and 0.01% sodium azide.		Storage at -20°C

**BACKGROUND**

Scaffold protein that connects plasma membrane proteins with members of the ezrin/moesin/radixin family and thereby helps to link them to the actin cytoskeleton and to regulate their surface expression. Necessary for recycling of internalized ADRB2. Was first known to play a role in the regulation of the activity and subcellular location of SLC9A3. Necessary for cAMP-mediated phosphorylation and inhibition of SLC9A3. May enhance Wnt signaling. May participate in HTR4 targeting to microvilli. Involved in the regulation of phosphate reabsorption in the renal proximal tubules. Involved in sperm capacitation. May participate in the regulation of the chloride and bicarbonate homeostasis in spermatozoa.

**APPLICATION**

To ensure optimal assay performance, AREX recommends conducting reagent titration tailored to each testing system for optimal detection results.

WB	1:500 - 1:2000
----	----------------

\*Results are sample-specific. Please refer to your local assay conditions and test parameters for reference.

**PRODUCT OVERVIEW**

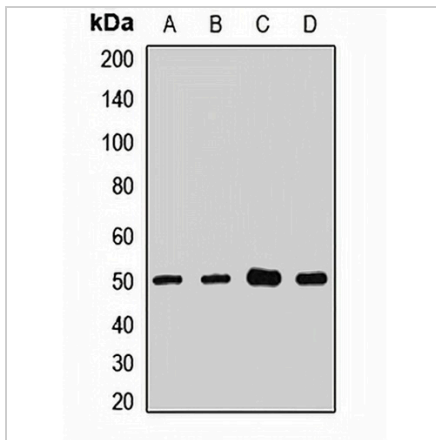
Description	Rabbit polyclonal antibody to NHERF1
Specificity	Recognizes endogenous levels of NHERF1 protein.
Antibody Type	Primary antibody
Immunogen	Recombinant fusion protein of human NHERF1
Purification	The antibody was purified by immunogen affinity chromatography.
Molecular Weight	Predicted: 22; Observed: 50 kD
Form/Buffer	Liquid in 0.42% Potassium phosphate, 0.87% Sodium chloride, pH 7.3, 30% glycerol, and 0.01% sodium azide.
Alternative Names	NHERF; NHERF1; Na(+)/H(+) exchange regulatory cofactor NHE-RF1; NHERF-1; Ezrin-radixin-moesin-binding phosphoprotein 50; EBP50; Regulatory cofactor of Na(+)/H(+) exchanger; Sodium-hydrogen exchanger regulatory factor 1; Solute carrier family 9 isoform A3 regulatory factor 1
Gene Symbol	SLC9A3R1
Entrez Gene	9368(Human); 26941(Mouse); 59114(Rat)
SwissProt	O14745(Human); P70441(Mouse); Q9JJ19(Rat)

\*AREX continuously optimizes our products. Webpage content may not reflect the latest updates. For inquiries, please contact [info@arexbio.com](mailto:info@arexbio.com) or your local distributor.

\*Clone Number, Reactivity, Source/Host and Clonality can be found in the product name and Key Features section above.

**DATASHEET****NHERF1 Rabbit Polyclonal Antibody**

CAT. NO. APA13788

**DATA**

Western blot analysis of NHERF1 expression in HT29 (A), MCF7 (B), mouse kidney (C), rat liver (D) whole cell lysates. (Predicted band size: 22; 38 kD; Observed band size: 50 kD)

**STORAGE**

Store at 4°C short term. For long term storage, store at -20°C, avoiding freeze/thaw cycles.

**NOTE**

For Research Use Only. Not for diagnostic, therapeutics, prophylactic or in vivo use.