

DATASHEET

FGF2 Rabbit Polyclonal Antibody

CAT. NO. APA13792

KEY FEATURES

Target	FGF2	Source / Host	Rabbit
Reactivity	Human, Mouse, Rat	Clonality	Polyclonal
Applications	WB, IHC, IF/ICC	Conjugation	Unconjugated
Form / Buffer	Liquid in 0.42% Potassium phosphate, 0.87% Sodium chloride, pH 7.3, 30% glycerol, and 0.01% sodium azide.		Storage at-20°C

BACKGROUND

Acts as a ligand for FGFR1, FGFR2, FGFR3 and FGFR4 . Also acts as an integrin ligand which is required for FGF2 signaling . Binds to integrin ITGAV:ITGB3 . Plays an important role in the regulation of cell survival, cell division, cell differentiation and cell migration . Functions as a potent mitogen in vitro . Can induce angiogenesis . Mediates phosphorylation of ERK1/2 and thereby promotes retinal lens fiber differentiation .

APPLICATION

To ensure optimal assay performance, AREX recommends conducting reagent titration tailored to each testing system for optimal detection results.

WB	1:500 - 1:2000
IHC	1:50 - 1:200
IF/ICC	1:50 - 1:200

*Results are sample-specific. Please refer to your local assay conditions and test parameters for reference.

PRODUCT OVERVIEW

Description	Rabbit polyclonal antibody to FGF2
Specificity	Recognizes endogenous levels of FGF2 protein.
Antibody Type	Primary antibody
Immunogen	Recombinant fusion protein of human FGF2
Purification	The antibody was purified by immunogen affinity chromatography.
Molecular Weight	Predicted: 17; Observed: 26 kD
Form/Buffer	Liquid in 0.42% Potassium phosphate, 0.87% Sodium chloride, pH 7.3, 30% glycerol, and 0.01% sodium azide.
Alternative Names	FGFB; Fibroblast growth factor 2; FGF-2; Basic fibroblast growth factor; bFGF; Heparin-binding growth factor 2; HBGF-2
Gene Symbol	FGF2
Entrez Gene	2247(Human); 14173(Mouse); 54250(Rat)
SwissProt	P09038(Human); P15655(Mouse); P13109(Rat)

*AREX continuously optimizes our products. Webpage content may not reflect the latest updates. For inquiries, please contact info@arexbio.com or your local distributor.

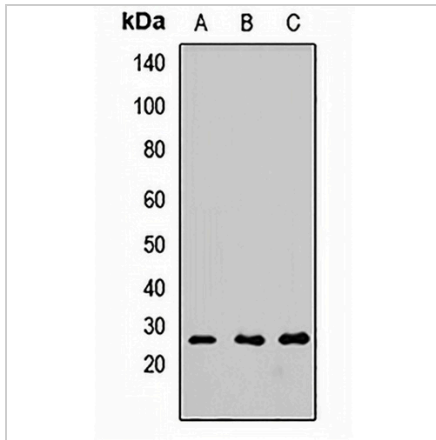
*Clone Number, Reactivity, Source/Host and Clonality can be found in the product name and Key Features section above.

DATASHEET

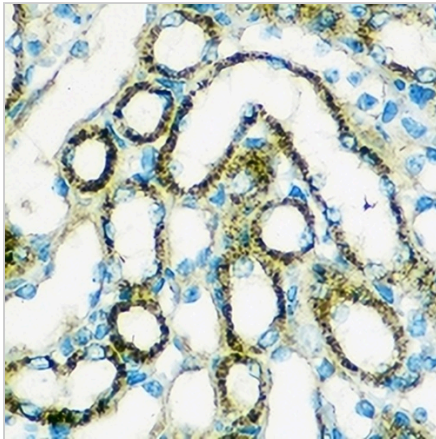
FGF2 Rabbit Polyclonal Antibody

CAT. NO. APA13792

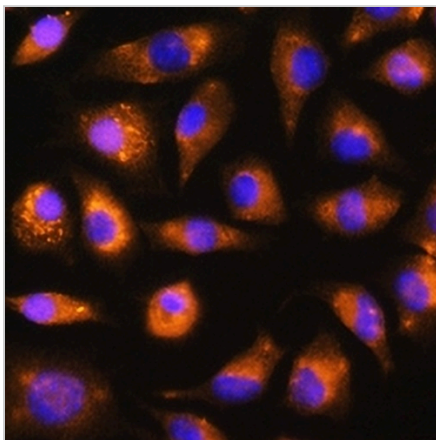
DATA



Western blot analysis of FGF2 expression in HeLa (A), K562 (B), mouse spleen (C) whole cell lysates. (Predicted band size: 17; 21; 22; 30 kD; Observed band size: 26 kD)



Immunohistochemical analysis of FGF2 staining in mouse kidney formalin fixed paraffin embedded tissue section. The section was pre-treated using heat mediated antigen retrieval with sodium citrate buffer (pH 6.0). The section was then incubated with the antibody at room temperature and detected using an HRP conjugated compact polymer system. DAB was used as the chromogen. The section was then counterstained with haematoxylin and mounted with DPX.



Immunofluorescent analysis of FGF2 staining in L929 cells. Formalin-fixed cells were permeabilized with 0.1% Triton X-100 in TBS for 5-10 minutes and blocked with 3% BSA-PBS for 30 minutes at room temperature. Cells were probed with the primary antibody in 3% BSA-PBS and incubated overnight at 4 °C in a humidified chamber. Cells were washed with PBST and incubated with a Alexa Fluor 594-conjugated secondary antibody (red) in PBS at room temperature in the dark.

STORAGE

Store at 4°C short term. For long term storage, store at -20°C, avoiding freeze/thaw cycles.

NOTE

For Research Use Only. Not for diagnostic, therapeutics, prophylactic or in vivo use.