

**DATASHEET**

**NEDD4 Rabbit Polyclonal Antibody**

CAT. NO. APA13801

**KEY FEATURES**

Target	NEDD4	Source / Host	Rabbit
Reactivity	Human, Mouse, Rat	Clonality	Polyclonal
Applications	WB, IHC	Conjugation	Unconjugated
Form / Buffer	Liquid in 0.42% Potassium phosphate, 0.87% Sodium chloride, pH 7.3, 30% glycerol, and 0.01% sodium azide.		Storage at -20°C

**BACKGROUND**

E3 ubiquitin-protein ligase which accepts ubiquitin from an E2 ubiquitin-conjugating enzyme in the form of a thioester and then directly transfers the ubiquitin to targeted substrates. Specifically ubiquitinates 'Lys-63' in target proteins . Involved in the pathway leading to the degradation of VEGFR-2/KDFR, independently of its ubiquitin-ligase activity. Monoubiquitinates IGF1R at multiple sites, thus leading to receptor internalization and degradation in lysosomes . Ubiquitinates FGFR1, leading to receptor internalization and degradation in lysosomes . Promotes ubiquitination of RAPGEF2 . According to PubMed:18562292 the direct link between NEDD4 and PTEN regulation through polyubiquitination described in PubMed:17218260 is questionable.

**APPLICATION**

To ensure optimal assay performance, AREX recommends conducting reagent titration tailored to each testing system for optimal detection results.

WB	1:500 - 1:2000
IHC	1:50 - 1:200

\*Results are sample-specific. Please refer to your local assay conditions and test parameters for reference.

**PRODUCT OVERVIEW**

Description	Rabbit polyclonal antibody to NEDD4
Specificity	Recognizes endogenous levels of NEDD4 protein.
Antibody Type	Primary antibody
Immunogen	Recombinant fusion protein of human NEDD4
Purification	The antibody was purified by immunogen affinity chromatography.
Molecular Weight	Predicted: 104; Observed: 120 kD
Form/Buffer	Liquid in 0.42% Potassium phosphate, 0.87% Sodium chloride, pH 7.3, 30% glycerol, and 0.01% sodium azide.
Alternative Names	KIAA0093; NEDD4-1; E3 ubiquitin-protein ligase NEDD4; Cell proliferation-inducing gene 53 protein; Neural precursor cell expressed developmentally down-regulated protein 4; NEDD-4
Gene Symbol	NEDD4
Entrez Gene	4734(Human); 17999(Mouse); 25489(Rat)
SwissProt	P46934(Human); P46935(Mouse); Q62940(Rat)

\*AREX continuously optimizes our products. Webpage content may not reflect the latest updates. For inquiries, please contact [info@arexbio.com](mailto:info@arexbio.com) or your local distributor.

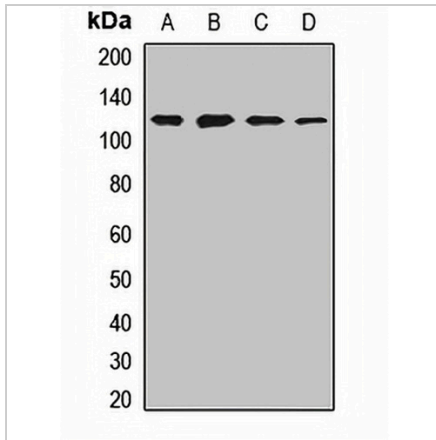
\*Clone Number, Reactivity, Source/Host and Clonality can be found in the product name and Key Features section above.

**DATASHEET**

**NEDD4 Rabbit Polyclonal Antibody**

CAT. NO. APA13801

**DATA**



Western blot analysis of NEDD4 expression in HeLa (A), Jurkat (B), A549 (C), SKOV3 (D) whole cell lysates. (Predicted band size: 104; 140; 147; 149 kD; Observed band size: 120 kD)



Immunohistochemical analysis of NEDD4 staining in human prostate cancer formalin fixed paraffin embedded tissue section. The section was pre-treated using heat mediated antigen retrieval with sodium citrate buffer (pH 6.0). The section was then incubated with the antibody at room temperature and detected using an HRP conjugated compact polymer system. DAB was used as the chromogen. The section was then counterstained with haematoxylin and mounted with DPX.

**STORAGE**

Store at 4°C short term. For long term storage, store at -20°C, avoiding freeze/thaw cycles.

**NOTE**

For Research Use Only. Not for diagnostic, therapeutics, prophylactic or in vivo use.