

**DATASHEET**

**ZO1 Rabbit Polyclonal Antibody**

CAT. NO. APA13805

**KEY FEATURES**

Target	ZO1	Source / Host	Rabbit
Reactivity	Human	Clonality	Polyclonal
Applications	WB	Conjugation	Unconjugated
Form / Buffer	Liquid in 0.42% Potassium phosphate, 0.87% Sodium chloride, pH 7.3, 30% glycerol, and 0.01% sodium azide.		Storage at -20°C

**BACKGROUND**

TJP1, TJP2, and TJP3 are closely related scaffolding proteins that link tight junction (TJ) transmembrane proteins such as claudins, junctional adhesion molecules, and occludin to the actin cytoskeleton transmembrane proteins such as claudins, junctional adhesion molecules, and occludin to the actin cytoskeleton . Forms a multistranded TJP1/ZO1 condensate which elongates to form a tight junction belt, the belt is anchored at the apical cell membrane via interaction with PATJ . The tight junction acts to limit movement of substances through the paracellular space and as a boundary between the compositionally distinct apical and basolateral plasma membrane domains of epithelial and endothelial cells.

**APPLICATION**

To ensure optimal assay performance, AREX recommends conducting reagent titration tailored to each testing system for optimal detection results.

WB	1:500 - 1:2000
IP	1:50 - 1:100

\*Results are sample-specific. Please refer to your local assay conditions and test parameters for reference.

**PRODUCT OVERVIEW**

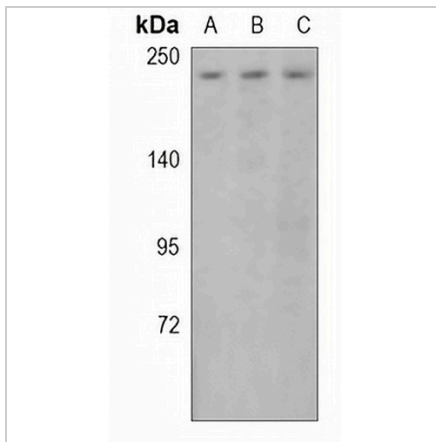
Description	Rabbit polyclonal antibody to ZO1
Specificity	Recognizes endogenous levels of ZO1 protein.
Antibody Type	Primary antibody
Immunogen	Recombinant fusion protein of human ZO1
Purification	The antibody was purified by immunogen affinity chromatography.
Molecular Weight	Predicted: 186; Observed: 240 kD
Form/Buffer	Liquid in 0.42% Potassium phosphate, 0.87% Sodium chloride, pH 7.3, 30% glycerol, and 0.01% sodium azide.
Alternative Names	ZO1; Tight junction protein ZO-1; Tight junction protein 1; Zona occludens protein 1; Zonula occludens protein 1
Gene Symbol	TJP1
Entrez Gene	7082(Human); 21872(Mouse)
SwissProt	Q07157(Human); P39447(Mouse)

\*AREX continuously optimizes our products. Webpage content may not reflect the latest updates. For inquiries, please contact [info@arex.bio](mailto:info@arex.bio) or your local distributor.

\*Clone Number, Reactivity, Source/Host and Clonality can be found in the product name and Key Features section above.

**DATASHEET****ZO1 Rabbit Polyclonal Antibody**

CAT. NO. APA13805

**DATA**

Western blot analysis of ZO1 expression in MCF7 (A), HeLa (B), Myla2059 (C) whole cell lysates. (Predicted band size: 186; 195 kD; Observed band size: 240 kD)

**STORAGE**

Store at 4°C short term. For long term storage, store at -20°C, avoiding freeze/thaw cycles.

**NOTE**

For Research Use Only. Not for diagnostic, therapeutics, prophylactic or in vivo use.