

DATASHEET

SMNDC1 Rabbit Polyclonal Antibody

CAT. NO. APA13810

KEY FEATURES

Target	SMNDC1	Source / Host	Rabbit
Reactivity	Human, Mouse, Rat	Clonality	Polyclonal
Applications	WB	Conjugation	Unconjugated
Form / Buffer	Liquid in 0.42% Potassium phosphate, 0.87% Sodium chloride, pH 7.3, 30% glycerol, and 0.01% sodium azide.		Storage at -20°C

BACKGROUND

Involved in spliceosome assembly.

APPLICATION

To ensure optimal assay performance, AREX recommends conducting reagent titration tailored to each testing system for optimal detection results.

WB	1:500 - 1:2000
----	----------------

*Results are sample-specific. Please refer to your local assay conditions and test parameters for reference.

PRODUCT OVERVIEW

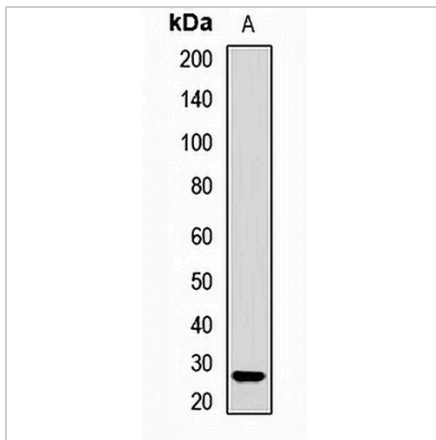
Description	Rabbit polyclonal antibody to SMNDC1
Specificity	Recognizes endogenous levels of SMNDC1 protein.
Antibody Type	Primary antibody
Immunogen	Recombinant fusion protein of human SMNDC1
Purification	The antibody was purified by immunogen affinity chromatography.
Molecular Weight	Predicted: 26 kD; Observed: 27 kD
Form/Buffer	Liquid in 0.42% Potassium phosphate, 0.87% Sodium chloride, pH 7.3, 30% glycerol, and 0.01% sodium azide.
Alternative Names	SMNR; SPF30; Survival of motor neuron-related-splicing factor 30; 30 kDa splicing factor SMNrp; SMN-related protein; Survival motor neuron domain-containing protein 1
Gene Symbol	SMNDC1
Entrez Gene	10285(Human); 76479(Mouse); 287768(Rat)
SwissProt	O75940(Human); Q8BGT7(Mouse); Q4QQU6(Rat)

*AREX continuously optimizes our products. Webpage content may not reflect the latest updates. For inquiries, please contact info@arexbio.com or your local distributor.

*Clone Number, Reactivity, Source/Host and Clonality can be found in the product name and Key Features section above.

DATASHEET**SMNDC1 Rabbit Polyclonal Antibody**

CAT. NO. APA13810

DATA

Western blot analysis of SMNDC1 expression in 721B (A) whole cell lysates. (Predicted band size: 26 kD; Observed band size: 27 kD)

STORAGE

Store at 4°C short term. For long term storage, store at -20°C, avoiding freeze/thaw cycles.

NOTE

For Research Use Only. Not for diagnostic, therapeutics, prophylactic or in vivo use.