

DATASHEET

LRRC59 Rabbit Polyclonal Antibody

CAT. NO. APA13825

KEY FEATURES

Target	LRRC59	Source / Host	Rabbit
Reactivity	Human, Mouse, Rat	Clonality	Polyclonal
Applications	WB, IHC	Conjugation	Unconjugated
Form / Buffer	Liquid in 0.42% Potassium phosphate, 0.87% Sodium chloride, pH 7.3, 30% glycerol, and 0.01% sodium azide.		Storage at -20°C

BACKGROUND

Required for nuclear import of FGF1, but not that of FGF2. Might regulate nuclear import of exogenous FGF1 by facilitating interaction with the nuclear import machinery and by transporting cytosolic FGF1 to, and possibly through, the nuclear pores.

APPLICATION

To ensure optimal assay performance, AREX recommends conducting reagent titration tailored to each testing system for optimal detection results.

WB	1:500 - 1:2000
IHC	1:50 - 1:200

*Results are sample-specific. Please refer to your local assay conditions and test parameters for reference.

PRODUCT OVERVIEW

Description	Rabbit polyclonal antibody to LRRC59
Specificity	Recognizes endogenous levels of LRRC59 protein.
Antibody Type	Primary antibody
Immunogen	Recombinant fusion protein of human LRRC59
Purification	The antibody was purified by immunogen affinity chromatography.
Molecular Weight	Predicted: 34 kD; Observed: 37 kD
Form/Buffer	Liquid in 0.42% Potassium phosphate, 0.87% Sodium chloride, pH 7.3, 30% glycerol, and 0.01% sodium azide.
Alternative Names	Leucine-rich repeat-containing protein 59; Ribosome-binding protein p34; p34
Gene Symbol	LRRC59
Entrez Gene	55379(Human); 98238(Mouse); 287633(Rat)
SwissProt	Q96AG4(Human); Q922Q8(Mouse); Q5RJR8(Rat)

*AREX continuously optimizes our products. Webpage content may not reflect the latest updates. For inquiries, please contact info@arexbio.com or your local distributor.

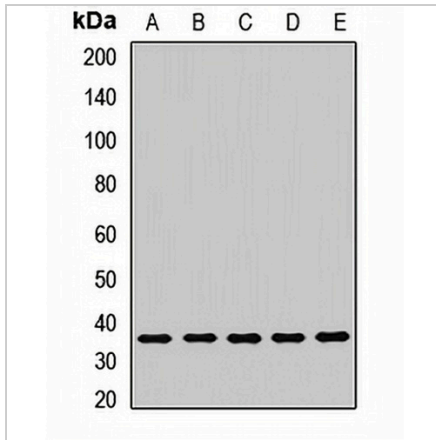
*Clone Number, Reactivity, Source/Host and Clonality can be found in the product name and Key Features section above.

DATASHEET

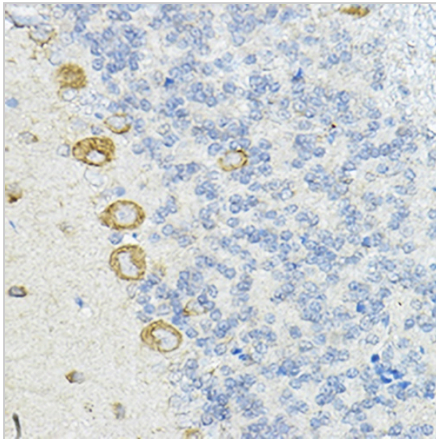
LRRC59 Rabbit Polyclonal Antibody

CAT. NO. APA13825

DATA



Western blot analysis of LRRC59 expression in Hela (A), HepG2 (B), NIH3T3 (C), mouse liver (D), rat liver (E) whole cell lysates. (Predicted band size: 34 kD; Observed band size: 37 kD)



Immunohistochemical analysis of LRRC59 staining in rat cerebellum formalin fixed paraffin embedded tissue section. The section was pre-treated using heat mediated antigen retrieval with sodium citrate buffer (pH 6.0). The section was then incubated with the antibody at room temperature and detected using an HRP conjugated compact polymer system. DAB was used as the chromogen. The section was then counterstained with haematoxylin and mounted with DPX.

STORAGE

Store at 4°C short term. For long term storage, store at -20°C, avoiding freeze/thaw cycles.

NOTE

For Research Use Only. Not for diagnostic, therapeutics, prophylactic or in vivo use.