

DATASHEET

ADAM22 Rabbit Polyclonal Antibody

CAT. NO. APA13828

KEY FEATURES

Target	ADAM22	Source / Host	Rabbit
Reactivity	Human, Mouse, Rat	Clonality	Polyclonal
Applications	WB	Conjugation	Unconjugated
Form / Buffer	Liquid in 0.42% Potassium phosphate, 0.87% Sodium chloride, pH 7.3, 30% glycerol, and 0.01% sodium azide.		Storage at -20°C

BACKGROUND

Probable ligand for integrin in the brain. This is a non catalytic metalloprotease-like protein . Involved in regulation of cell adhesion and spreading and in inhibition of cell proliferation. Neuronal receptor for LGI1.

APPLICATION

To ensure optimal assay performance, AREX recommends conducting reagent titration tailored to each testing system for optimal detection results.

WB	1:500 - 1:2000
----	----------------

*Results are sample-specific. Please refer to your local assay conditions and test parameters for reference.

PRODUCT OVERVIEW

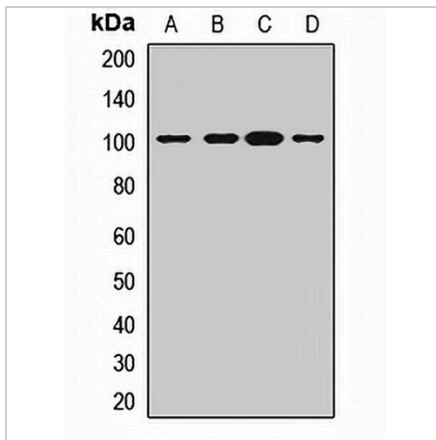
Description	Rabbit polyclonal antibody to ADAM22
Specificity	Recognizes endogenous levels of ADAM22 protein.
Antibody Type	Primary antibody
Immunogen	Recombinant fusion protein of human ADAM22
Purification	The antibody was purified by immunogen affinity chromatography.
Molecular Weight	Predicted: 91; Observed: 100 kD
Form/Buffer	Liquid in 0.42% Potassium phosphate, 0.87% Sodium chloride, pH 7.3, 30% glycerol, and 0.01% sodium azide.
Alternative Names	MDC2; Disintegrin and metalloproteinase domain-containing protein 22; ADAM 22; Metalloproteinase-disintegrin ADAM22-3; Metalloproteinase-like, disintegrin-like, and cysteine-rich protein 2
Gene Symbol	ADAM22
Entrez Gene	53616(Human); 11496(Mouse)
SwissProt	Q9P0K1(Human); Q9R1V6(Mouse)

*AREX continuously optimizes our products. Webpage content may not reflect the latest updates. For inquiries, please contact info@arexbio.com or your local distributor.

*Clone Number, Reactivity, Source/Host and Clonality can be found in the product name and Key Features section above.

DATASHEET**ADAM22 Rabbit Polyclonal Antibody**

CAT. NO. APA13828

DATA

Western blot analysis of ADAM22 expression in SHSY5Y (A), mouse brain (B), mouse kidney (C), rat heart (D) whole cell lysates. (Predicted band size: 91; 95; 96; 100 kD; Observed band size: 100 kD)

STORAGE

Store at 4°C short term. For long term storage, store at -20°C, avoiding freeze/thaw cycles.

NOTE

For Research Use Only. Not for diagnostic, therapeutics, prophylactic or in vivo use.