

DATASHEET

IL-17RD Rabbit Polyclonal Antibody

CAT. NO. APA13829

KEY FEATURES

Target	IL-17RD	Source / Host	Rabbit
Reactivity	Human, Mouse, Rat	Clonality	Polyclonal
Applications	WB	Conjugation	Unconjugated
Form / Buffer	Liquid in 0.42% Potassium phosphate, 0.87% Sodium chloride, pH 7.3, 30% glycerol, and 0.01% sodium azide.		Storage at-20°C

BACKGROUND

Feedback inhibitor of fibroblast growth factor mediated Ras-MAPK signaling and ERK activation . Regulates the nuclear ERK signaling pathway by spatially blocking nuclear translocation of activated ERK without inhibiting cytoplasmic phosphorylation of ERK . Mediates JNK activation and may be involved in apoptosis . May inhibit FGF-induced FGFR1 tyrosine phosphorylation . Might have a role in the early stages of fate specification of GnRH-secreting neurons . Inhibits TGFB-induced epithelial-to-mesenchymal transition in lens epithelial cells .

APPLICATION

To ensure optimal assay performance, AREX recommends conducting reagent titration tailored to each testing system for optimal detection results.

WB	1:500 - 1:2000
----	----------------

*Results are sample-specific. Please refer to your local assay conditions and test parameters for reference.

PRODUCT OVERVIEW

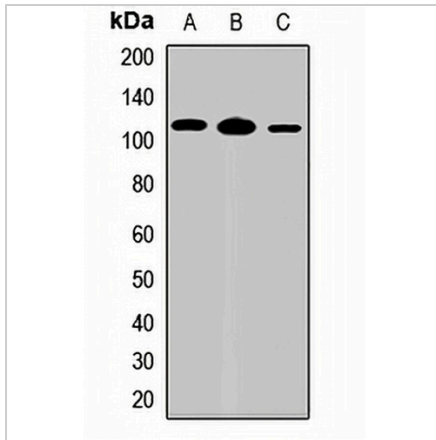
Description	Rabbit polyclonal antibody to IL-17RD
Specificity	Recognizes endogenous levels of IL-17RD protein.
Antibody Type	Primary antibody
Immunogen	Recombinant fusion protein of human IL-17RD
Purification	The antibody was purified by immunogen affinity chromatography.
Molecular Weight	Predicted: 66; Observed: 110 kD
Form/Buffer	Liquid in 0.42% Potassium phosphate, 0.87% Sodium chloride, pH 7.3, 30% glycerol, and 0.01% sodium azide.
Alternative Names	IL17RLM; SEF; Interleukin-17 receptor D; IL-17 receptor D; IL-17RD; IL17Rhom; Interleukin-17 receptor-like protein; Sef homolog; hSef
Gene Symbol	IL17RD
Entrez Gene	54756(Human); 171463(Mouse)
SwissProt	Q8NFM7(Human); Q8JZL1(Mouse)

*AREX continuously optimizes our products. Webpage content may not reflect the latest updates. For inquiries, please contact info@arexbio.com or your local distributor.

*Clone Number, Reactivity, Source/Host and Clonality can be found in the product name and Key Features section above.

DATASHEET**IL-17RD Rabbit Polyclonal Antibody**

CAT. NO. APA13829

DATA

Western blot analysis of IL-17RD expression in HT29 (A), mouse lung (B), rat brain (C) whole cell lysates. (Predicted band size: 66; 79; 82 kD; Observed band size: 110 kD)

STORAGE

Store at 4°C short term. For long term storage, store at -20°C, avoiding freeze/thaw cycles.

NOTE

For Research Use Only. Not for diagnostic, therapeutics, prophylactic or in vivo use.