

DATASHEET

UBE2O Rabbit Polyclonal Antibody

CAT. NO. APA13830

KEY FEATURES

Target	UBE2O	Source / Host	Rabbit
Reactivity	Human, Mouse	Clonality	Polyclonal
Applications	WB, IF/ICC	Conjugation	Unconjugated
Form / Buffer	Liquid in 0.42% Potassium phosphate, 0.87% Sodium chloride, pH 7.3, 30% glycerol, and 0.01% sodium azide.		Storage at -20°C

BACKGROUND

E2/E3 hybrid ubiquitin-protein ligase that displays both E2 and E3 ligase activities and mediates monoubiquitination of target proteins . Negatively regulates TRAF6-mediated NF-kappa-B activation independently of its E2 activity . Acts as a positive regulator of BMP7 signaling by mediating monoubiquitination of SMAD6, thereby regulating adipogenesis . Mediates monoubiquitination at different sites of the nuclear localization signal (NLS) of BAP1, leading to cytoplasmic retention of BAP1. Also able to monoubiquitinate the NLS of other chromatin-associated proteins, such as INO80 and CXXC1, affecting their subcellular location .

APPLICATION

To ensure optimal assay performance, AREX recommends conducting reagent titration tailored to each testing system for optimal detection results.

WB	1:500 - 1:2000
IF/ICC	1:50 - 1:200

*Results are sample-specific. Please refer to your local assay conditions and test parameters for reference.

PRODUCT OVERVIEW

Description	Rabbit polyclonal antibody to UBE2O
Specificity	Recognizes endogenous levels of UBE2O protein.
Antibody Type	Primary antibody
Immunogen	Recombinant fusion protein of human UBE2O
Purification	The antibody was purified by immunogen affinity chromatography.
Molecular Weight	Predicted: 141 kD; Observed: 200 kD
Form/Buffer	Liquid in 0.42% Potassium phosphate, 0.87% Sodium chloride, pH 7.3, 30% glycerol, and 0.01% sodium azide.
Alternative Names	KIAA1734; Ubiquitin-conjugating enzyme E2 O; Ubiquitin carrier protein O; Ubiquitin-conjugating enzyme E2 of 230 kDa; Ubiquitin-conjugating enzyme E2-230K; Ubiquitin-protein ligase O
Gene Symbol	UBE2O
Entrez Gene	63893(Human); 217342(Mouse)
SwissProt	Q9C0C9(Human); Q6ZPJ3(Mouse)

*AREX continuously optimizes our products. Webpage content may not reflect the latest updates. For inquiries, please contact info@arexbio.com or your local distributor.

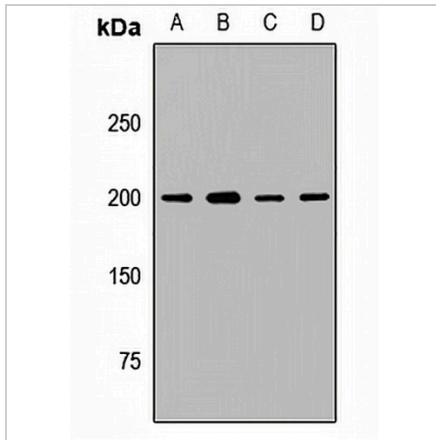
*Clone Number, Reactivity, Source/Host and Clonality can be found in the product name and Key Features section above.

DATASHEET

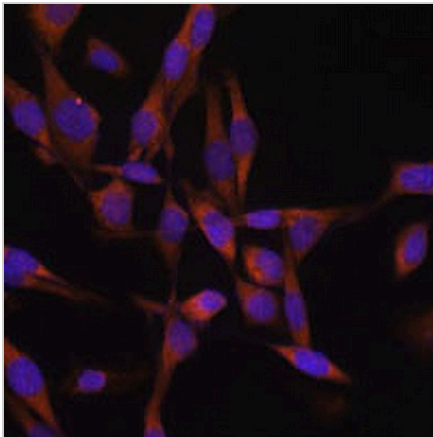
UBE2O Rabbit Polyclonal Antibody

CAT. NO. APA13830

DATA



Western blot analysis of UBE2O expression in HepG2 (A), Jurkat (B), mouse heart (C), mouse brain (D) whole cell lysates. (Predicted band size: 141 kD; Observed band size: 200 kD)



Immunofluorescent analysis of UBE2O staining in HeLa cells. Formalin-fixed cells were permeabilized with 0.1% Triton X-100 in TBS for 5-10 minutes and blocked with 3% BSA-PBS for 30 minutes at room temperature. Cells were probed with the primary antibody in 3% BSA-PBS and incubated overnight at 4 °C in a humidified chamber. Cells were washed with PBST and incubated with a AREX® Fluor 594-conjugated secondary antibody (red) in PBS at room temperature in the dark. DAPI was used to stain the cell nuclei (blue).

STORAGE

Store at 4°C short term. For long term storage, store at -20°C, avoiding freeze/thaw cycles.

NOTE

For Research Use Only. Not for diagnostic, therapeutics, prophylactic or in vivo use.