

DATASHEET

SUCLA2 Rabbit Polyclonal Antibody

CAT. NO. APA13832

KEY FEATURES

Target	SUCLA2	Source / Host	Rabbit
Reactivity	Human, Mouse, Rat	Clonality	Polyclonal
Applications	WB	Conjugation	Unconjugated
Form / Buffer	Liquid in 0.42% Potassium phosphate, 0.87% Sodium chloride, pH 7.3, 30% glycerol, and 0.01% sodium azide.		Storage at -20°C

BACKGROUND

ATP-specific succinyl-CoA synthetase functions in the citric acid cycle (TCA), coupling the hydrolysis of succinyl-CoA to the synthesis of ATP and thus represents the only step of substrate-level phosphorylation in the TCA, coupling the hydrolysis of succinyl-CoA to the synthesis of ATP and thus represents the only step of substrate-level phosphorylation in the TCA. The beta subunit provides nucleotide specificity of the enzyme and binds the substrate succinate, while the binding sites for coenzyme A and phosphate are found in the alpha subunit. Also able to act as an ATP-specific itaconyl- and malyl-CoA synthetase.

APPLICATION

To ensure optimal assay performance, AREX recommends conducting reagent titration tailored to each testing system for optimal detection results.

WB	1:500 - 1:2000
----	----------------

*Results are sample-specific. Please refer to your local assay conditions and test parameters for reference.

PRODUCT OVERVIEW

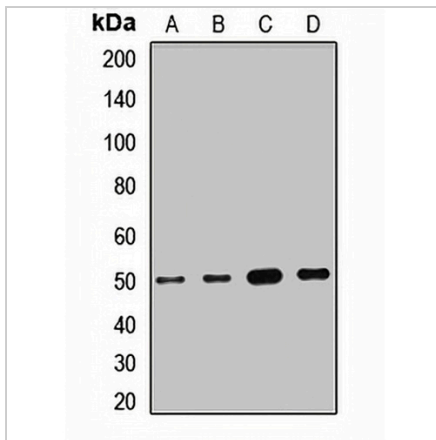
Description	Rabbit polyclonal antibody to SUCLA2
Specificity	Recognizes endogenous levels of SUCLA2 protein.
Antibody Type	Primary antibody
Immunogen	Recombinant fusion protein of human SUCLA2
Purification	The antibody was purified by immunogen affinity chromatography.
Molecular Weight	Predicted: 48; Observed: 50 kD
Form/Buffer	Liquid in 0.42% Potassium phosphate, 0.87% Sodium chloride, pH 7.3, 30% glycerol, and 0.01% sodium azide.
Alternative Names	Succinyl-CoA ligase [ADP-forming] subunit beta mitochondrial; ATP-specific succinyl-CoA synthetase subunit beta; Renal carcinoma antigen NY-REN-39; Succinyl-CoA synthetase beta-A chain; SCS-betaA
Gene Symbol	SUCLA2
Entrez Gene	8803(Human); 20916(Mouse)
SwissProt	Q9P2R7(Human); Q9Z2I9(Mouse)

*AREX continuously optimizes our products. Webpage content may not reflect the latest updates. For inquiries, please contact info@arexbio.com or your local distributor.

*Clone Number, Reactivity, Source/Host and Clonality can be found in the product name and Key Features section above.

DATASHEET**SUCLA2 Rabbit Polyclonal Antibody**

CAT. NO. APA13832

DATA

Western blot analysis of SUCLA2 expression in SW480 (A), HeLa (B), mouse brain (C), rat liver (D) whole cell lysates. (Predicted band size: 48; 50 kD; Observed band size: 50 kD)

STORAGE

Store at 4°C short term. For long term storage, store at -20°C, avoiding freeze/thaw cycles.

NOTE

For Research Use Only. Not for diagnostic, therapeutics, prophylactic or in vivo use.