

DATASHEET

ZC3H15 Rabbit Polyclonal Antibody

CAT. NO. APA13834

KEY FEATURES

Target	ZC3H15	Source / Host	Rabbit
Reactivity	Human, Mouse, Rat	Clonality	Polyclonal
Applications	WB	Conjugation	Unconjugated
Form / Buffer	Liquid in 0.42% Potassium phosphate, 0.87% Sodium chloride, pH 7.3, 30% glycerol, and 0.01% sodium azide.		Storage at -20°C

BACKGROUND

Protects DRG1 from proteolytic degradation . Stimulates DRG1 GTPase activity likely by increasing the affinity for the potassium ions .

APPLICATION

To ensure optimal assay performance, AREX recommends conducting reagent titration tailored to each testing system for optimal detection results.

WB	1:500 - 1:2000
----	----------------

*Results are sample-specific. Please refer to your local assay conditions and test parameters for reference.

PRODUCT OVERVIEW

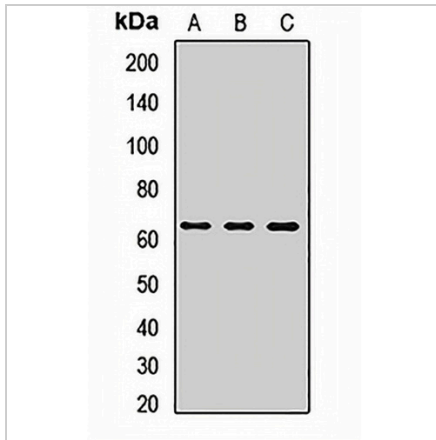
Description	Rabbit polyclonal antibody to ZC3H15
Specificity	Recognizes endogenous levels of ZC3H15 protein.
Antibody Type	Primary antibody
Immunogen	Recombinant fusion protein of human ZC3H15
Purification	The antibody was purified by immunogen affinity chromatography.
Molecular Weight	Predicted: 18; Observed: 65 kD
Form/Buffer	Liquid in 0.42% Potassium phosphate, 0.87% Sodium chloride, pH 7.3, 30% glycerol, and 0.01% sodium azide.
Alternative Names	DFRP1; LEREPO4; Zinc finger CCCH domain-containing protein 15; DRG family-regulatory protein 1; Likely ortholog of mouse immediate early response erythropoietin 4
Gene Symbol	ZC3H15
Entrez Gene	55854(Human); 69082(Mouse); 362154(Rat)
SwissProt	Q8WU90(Human); Q3TIV5(Mouse); Q6U6G5(Rat)

*AREX continuously optimizes our products. Webpage content may not reflect the latest updates. For inquiries, please contact info@arexbio.com or your local distributor.

*Clone Number, Reactivity, Source/Host and Clonality can be found in the product name and Key Features section above.

DATASHEET**ZC3H15 Rabbit Polyclonal Antibody**

CAT. NO. APA13834

DATA

Western blot analysis of ZC3H15 expression in Jurkat (A), MCF7 (B), mouse liver (C) whole cell lysates. (Predicted band size: 18; 48 kD; Observed band size: 65 kD)

STORAGE

Store at 4°C short term. For long term storage, store at -20°C, avoiding freeze/thaw cycles.

NOTE

For Research Use Only. Not for diagnostic, therapeutics, prophylactic or in vivo use.