

**DATASHEET**

**Tim23 Rabbit Polyclonal Antibody**

CAT. NO. APA13835

**KEY FEATURES**

Target	Tim23	Source / Host	Rabbit
Reactivity	Human, Mouse, Rat	Clonality	Polyclonal
Applications	WB	Conjugation	Unconjugated
Form / Buffer	Liquid in 0.42% Potassium phosphate, 0.87% Sodium chloride, pH 7.3, 30% glycerol, and 0.01% sodium azide.		Storage at -20°C

**BACKGROUND**

Essential component of the TIM23 complex, a complex that mediates the translocation of transit peptide-containing proteins across the mitochondrial inner membrane. Has a role in the activation of stress-induced mitophagy by protecting PINK1 from OMA1-mediated degradation and facilitating its accumulation at the outer mitochondrial membrane in response to depolarization.

**APPLICATION**

To ensure optimal assay performance, AREX recommends conducting reagent titration tailored to each testing system for optimal detection results.

WB	1:500 - 1:2000
----	----------------

\*Results are sample-specific. Please refer to your local assay conditions and test parameters for reference.

**PRODUCT OVERVIEW**

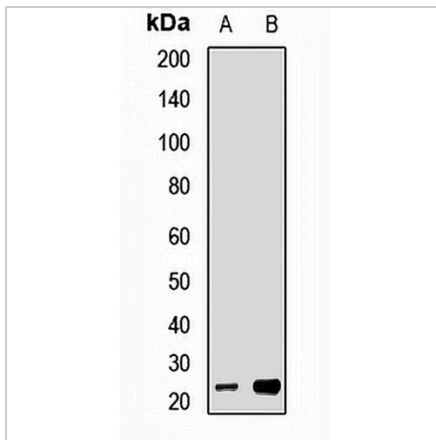
Description	Rabbit polyclonal antibody to Tim23
Specificity	Recognizes endogenous levels of Tim23 protein.
Antibody Type	Primary antibody
Immunogen	Recombinant fusion protein of human Tim23
Purification	The antibody was purified by immunogen affinity chromatography.
Molecular Weight	Predicted: 21 kD; Observed: 22 kD
Form/Buffer	Liquid in 0.42% Potassium phosphate, 0.87% Sodium chloride, pH 7.3, 30% glycerol, and 0.01% sodium azide.
Alternative Names	TIM23; Mitochondrial import inner membrane translocase subunit Tim23
Gene Symbol	TIMM23
Entrez Gene	100287932(Human)
SwissProt	O14925(Human)

\*AREX continuously optimizes our products. Webpage content may not reflect the latest updates. For inquiries, please contact [info@arexbio.com](mailto:info@arexbio.com) or your local distributor.

\*Clone Number, Reactivity, Source/Host and Clonality can be found in the product name and Key Features section above.

**DATASHEET****Tim23 Rabbit Polyclonal Antibody**

CAT. NO. APA13835

**DATA**

Western blot analysis of Tim23 expression in HepG2 (A), MCF7 (B) whole cell lysates. (Predicted band size: 21 kD; Observed band size: 22 kD)

**STORAGE**

Store at 4°C short term. For long term storage, store at -20°C, avoiding freeze/thaw cycles.

**NOTE**

For Research Use Only. Not for diagnostic, therapeutics, prophylactic or in vivo use.