

**DATASHEET**

**PLA2R Rabbit Polyclonal Antibody**

CAT. NO. APA13841

**KEY FEATURES**

Target	PLA2R	Source / Host	Rabbit
Reactivity	Human, Mouse	Clonality	Polyclonal
Applications	WB	Conjugation	Unconjugated
Form / Buffer	Liquid in 0.42% Potassium phosphate, 0.87% Sodium chloride, pH 7.3, 30% glycerol, and 0.01% sodium azide.		Storage at -20°C

**BACKGROUND**

Receptor for secretory phospholipase A2 (sPLA2). Acts as a receptor for phospholipase sPLA2-IB/PLA2G1B but not sPLA2-IIA/PLA2G2A. Also able to bind to snake PA2-like toxins. Although its precise function remains unclear, binding of sPLA2 to its receptor participates in both positive and negative regulation of sPLA2 functions as well as clearance of sPLA2. Binding of sPLA2-IB/PLA2G1B induces various effects depending on the cell type, such as activation of the mitogen-activated protein kinase (MAPK) cascade to induce cell proliferation, the production of lipid mediators, selective release of arachidonic acid in bone marrow-derived mast cells. In neutrophils, binding of sPLA2-IB/PLA2G1B can activate p38 MAPK to stimulate elastase release and cell adhesion.

**APPLICATION**

To ensure optimal assay performance, AREX recommends conducting reagent titration tailored to each testing system for optimal detection results.

WB	1:500 - 1:1000
----	----------------

\*Results are sample-specific. Please refer to your local assay conditions and test parameters for reference.

**PRODUCT OVERVIEW**

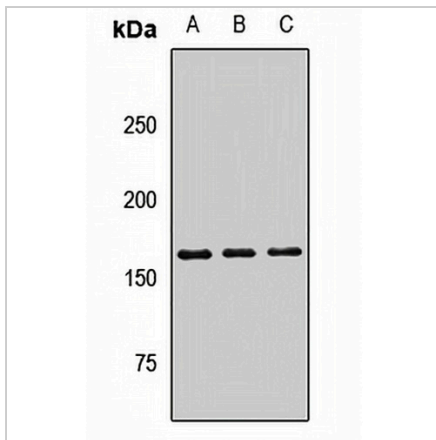
Description	Rabbit polyclonal antibody to PLA2R
Specificity	Recognizes endogenous levels of PLA2R protein.
Antibody Type	Primary antibody
Immunogen	Recombinant fusion protein of human PLA2R
Purification	The antibody was purified by immunogen affinity chromatography.
Molecular Weight	Predicted: 152; Observed: 168 kD
Form/Buffer	Liquid in 0.42% Potassium phosphate, 0.87% Sodium chloride, pH 7.3, 30% glycerol, and 0.01% sodium azide.
Alternative Names	CLEC13C; Secretory phospholipase A2 receptor; PLA2-R; PLA2R; 180 kDa secretory phospholipase A2 receptor; C-type lectin domain family 13 member C; M-type receptor
Gene Symbol	PLA2R1
Entrez Gene	22925(Human); 18779(Mouse)
SwissProt	Q13018(Human); Q62028(Mouse)

\*AREX continuously optimizes our products. Webpage content may not reflect the latest updates. For inquiries, please contact [info@arexbio.com](mailto:info@arexbio.com) or your local distributor.

\*Clone Number, Reactivity, Source/Host and Clonality can be found in the product name and Key Features section above.

**DATASHEET****PLA2R Rabbit Polyclonal Antibody**

CAT. NO. APA13841

**DATA**

Western blot analysis of PLA2R expression in SHSY5Y (A), mouse liver (B), mouse heart (C) whole cell lysates. (Predicted band size: 152; 168 kD; Observed band size: 168 kD)

**STORAGE**

Store at 4°C short term. For long term storage, store at -20°C, avoiding freeze/thaw cycles.

**NOTE**

For Research Use Only. Not for diagnostic, therapeutics, prophylactic or in vivo use.