

DATASHEET

MAFB Rabbit Polyclonal Antibody

CAT. NO. APA13844

KEY FEATURES

Target	MAFB	Source / Host	Rabbit
Reactivity	Human, Mouse, Rat	Clonality	Polyclonal
Applications	WB	Conjugation	Unconjugated
Form / Buffer	Liquid in 0.42% Potassium phosphate, 0.87% Sodium chloride, pH 7.3, 30% glycerol, and 0.01% sodium azide.		Storage at -20°C

BACKGROUND

Acts as a transcriptional activator or repressor . Plays a pivotal role in regulating lineage-specific hematopoiesis by repressing ETS1-mediated transcription of erythroid-specific genes in myeloid cells. Required for monocytic, macrophage, osteoclast, podocyte and islet beta cell differentiation. Involved in renal tubule survival and F4/80 maturation. Activates the insulin and glucagon promoters. Together with PAX6, transactivates weakly the glucagon gene promoter through the G1 element. SUMO modification controls its transcriptional activity and ability to specify macrophage fate. Binds element G1 on the glucagon promoter . Involved either as an oncogene or as a tumor suppressor, depending on the cell context.

APPLICATION

To ensure optimal assay performance, AREX recommends conducting reagent titration tailored to each testing system for optimal detection results.

WB	1:500 - 1:2000
----	----------------

*Results are sample-specific. Please refer to your local assay conditions and test parameters for reference.

PRODUCT OVERVIEW

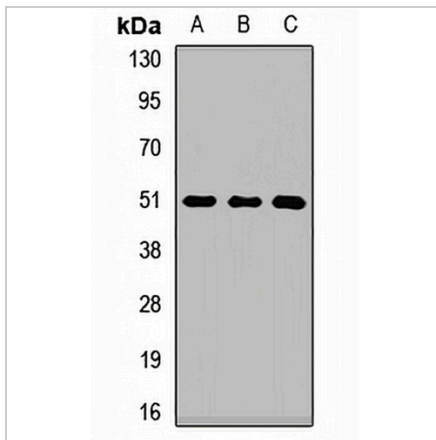
Description	Rabbit polyclonal antibody to MAFB
Specificity	Recognizes endogenous levels of MAFB protein.
Antibody Type	Primary antibody
Immunogen	Recombinant fusion protein of human MAFB
Purification	The antibody was purified by immunogen affinity chromatography.
Molecular Weight	Predicted: 35 kD; Observed: 50 kD
Form/Buffer	Liquid in 0.42% Potassium phosphate, 0.87% Sodium chloride, pH 7.3, 30% glycerol, and 0.01% sodium azide.
Alternative Names	KRML; Transcription factor MafB; Maf-B; V-maf musculoaponeurotic fibrosarcoma oncogene homolog B
Gene Symbol	MAFB
Entrez Gene	9935(Human); 16658(Mouse); 54264(Rat)
SwissProt	Q9Y5Q3(Human); P54841(Mouse); P54842(Rat)

*AREX continuously optimizes our products. Webpage content may not reflect the latest updates. For inquiries, please contact info@arexbio.com or your local distributor.

*Clone Number, Reactivity, Source/Host and Clonality can be found in the product name and Key Features section above.

DATASHEET**MAFB Rabbit Polyclonal Antibody**

CAT. NO. APA13844

DATA

Western blot analysis of MAFB expression in mouse liver (A), mouse kidney (B), rat liver (C) whole cell lysates. (Predicted band size: 35 kD; Observed band size: 50 kD)

STORAGE

Store at 4°C short term. For long term storage, store at -20°C, avoiding freeze/thaw cycles.

NOTE

For Research Use Only. Not for diagnostic, therapeutics, prophylactic or in vivo use.