

## DATASHEET

# INSRR Rabbit Polyclonal Antibody

CAT. NO. APA13845

### KEY FEATURES

Target	INSRR	Source / Host	Rabbit
Reactivity	Human, Mouse, Rat	Clonality	Polyclonal
Applications	WB	Conjugation	Unconjugated
Form / Buffer	Liquid in 0.42% Potassium phosphate, 0.87% Sodium chloride, pH 7.3, 30% glycerol, and 0.01% sodium azide.		Storage at -20°C

### BACKGROUND

Receptor with tyrosine-protein kinase activity. Functions as a pH sensing receptor which is activated by increased extracellular pH. Activates an intracellular signaling pathway that involves IRS1 and AKT1/PKB.

### APPLICATION

To ensure optimal assay performance, AREX recommends conducting reagent titration tailored to each testing system for optimal detection results.

WB	1:500 - 1:2000
----	----------------

\*Results are sample-specific. Please refer to your local assay conditions and test parameters for reference.

### PRODUCT OVERVIEW

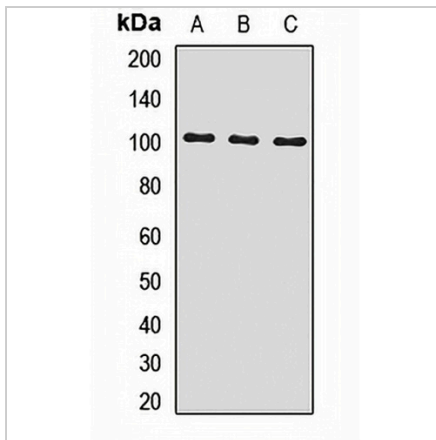
Description	Rabbit polyclonal antibody to INSRR
Specificity	Recognizes endogenous levels of INSRR protein.
Antibody Type	Primary antibody
Immunogen	Recombinant fusion protein of human INSRR
Purification	The antibody was purified by immunogen affinity chromatography.
Molecular Weight	Predicted: 143 kD; Observed: 105 kD
Form/Buffer	Liquid in 0.42% Potassium phosphate, 0.87% Sodium chloride, pH 7.3, 30% glycerol, and 0.01% sodium azide.
Alternative Names	IRR; Insulin receptor-related protein; IRR; IR-related receptor
Gene Symbol	INSRR
Entrez Gene	3645(Human); 23920(Mouse); 60663(Rat)
SwissProt	P14616(Human); Q9WTL4(Mouse); Q64716(Rat)

\*AREX continuously optimizes our products. Webpage content may not reflect the latest updates. For inquiries, please contact [info@arexbio.com](mailto:info@arexbio.com) or your local distributor.

\*Clone Number, Reactivity, Source/Host and Clonality can be found in the product name and Key Features section above.

**DATASHEET****INSRR Rabbit Polyclonal Antibody**

CAT. NO. APA13845

**DATA**

Western blot analysis of INSRR expression in mouse brain (A), mouse liver (B), rat kidney (C) whole cell lysates. (Predicted band size: 143 kD; Observed band size: 105 kD)

**STORAGE**

Store at 4°C short term. For long term storage, store at -20°C, avoiding freeze/thaw cycles.

**NOTE**

For Research Use Only. Not for diagnostic, therapeutics, prophylactic or in vivo use.