

DATASHEET

IL-1RL2 Rabbit Polyclonal Antibody

CAT. NO. APA13847

KEY FEATURES

Target	IL-1RL2	Source / Host	Rabbit
Reactivity	Human, Mouse, Rat	Clonality	Polyclonal
Applications	WB	Conjugation	Unconjugated
Form / Buffer	Liquid in 0.42% Potassium phosphate, 0.87% Sodium chloride, pH 7.3, 30% glycerol, and 0.01% sodium azide.		Storage at-20°C

BACKGROUND

Receptor for interleukin-36 (IL36A, IL36B and IL36G). After binding to interleukin-36 associates with the coreceptor IL1RAP to form the interleukin-36 receptor complex which mediates interleukin-36-dependent activation of NF-kappa-B, MAPK and other pathways . The IL-36 signaling system is thought to be present in epithelial barriers and to take part in local inflammatory response; it is similar to the IL-1 system. Seems to be involved in skin inflammatory response by induction of the IL-23/IL-17/IL-22 pathway.

APPLICATION

To ensure optimal assay performance, AREX recommends conducting reagent titration tailored to each testing system for optimal detection results.

WB	1:500 - 1:2000
----	----------------

*Results are sample-specific. Please refer to your local assay conditions and test parameters for reference.

PRODUCT OVERVIEW

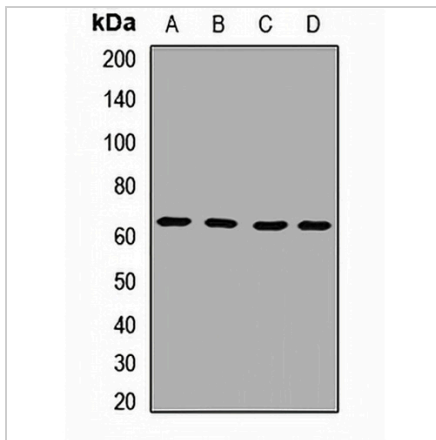
Description	Rabbit polyclonal antibody to IL-1RL2
Specificity	Recognizes endogenous levels of IL-1RL2 protein.
Antibody Type	Primary antibody
Immunogen	Recombinant fusion protein of human IL-1RL2
Purification	The antibody was purified by immunogen affinity chromatography.
Molecular Weight	Predicted: 51; Observed: 65 kD
Form/Buffer	Liquid in 0.42% Potassium phosphate, 0.87% Sodium chloride, pH 7.3, 30% glycerol, and 0.01% sodium azide.
Alternative Names	IL1RRP2; Interleukin-1 receptor-like 2; IL-36 receptor; IL-36R; Interleukin-1 receptor-related protein 2; IL-1Rrp2; IL1R-rp2
Gene Symbol	IL1RL2
Entrez Gene	8808(Human); 107527(Mouse)
SwissProt	Q9HB29(Human); Q9ERS7(Mouse)

*AREX continuously optimizes our products. Webpage content may not reflect the latest updates. For inquiries, please contact info@arexbio.com or your local distributor.

*Clone Number, Reactivity, Source/Host and Clonality can be found in the product name and Key Features section above.

DATASHEET**IL-1RL2 Rabbit Polyclonal Antibody**

CAT. NO. APA13847

DATA

Western blot analysis of IL-1RL2 expression in MCF7 (A), K562 (B), mouse lung (C), mouse heart (D) whole cell lysates. (Predicted band size: 51; 65 kD; Observed band size: 65 kD)

STORAGE

Store at 4°C short term. For long term storage, store at -20°C, avoiding freeze/thaw cycles.

NOTE

For Research Use Only. Not for diagnostic, therapeutics, prophylactic or in vivo use.