

DATASHEET

ATP4B Rabbit Polyclonal Antibody

CAT. NO. APA13848

KEY FEATURES

Target	ATP4B	Source / Host	Rabbit
Reactivity	Human, Mouse, Rat	Clonality	Polyclonal
Applications	WB	Conjugation	Unconjugated
Form / Buffer	Liquid in 0.42% Potassium phosphate, 0.87% Sodium chloride, pH 7.3, 30% glycerol, and 0.01% sodium azide.		Storage at -20°C

BACKGROUND

The beta subunit of the gastric H(+)/K(+) ATPase pump which transports H(+) ions in exchange for K(+) ions across the apical membrane of parietal cells. Plays a structural and regulatory role in the assembly and membrane targeting of a functionally active pump. Within a transport cycle, the transfer of a H(+) ion across the membrane is coupled to ATP hydrolysis and is associated with a transient phosphorylation of the alpha subunit that shifts the pump conformation from inward-facing (E1) to outward-facing state (E2). Interacts with the phosphorylation domain of the alpha subunit and functions as a ratchet, stabilizing the lumenal-open E2 conformation and preventing the reverse reaction of the transport cycle.

APPLICATION

To ensure optimal assay performance, AREX recommends conducting reagent titration tailored to each testing system for optimal detection results.

WB	1:500 - 1:1000
----	----------------

*Results are sample-specific. Please refer to your local assay conditions and test parameters for reference.

PRODUCT OVERVIEW

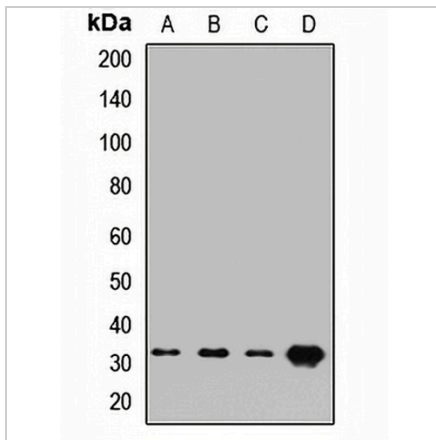
Description	Rabbit polyclonal antibody to ATP4B
Specificity	Recognizes endogenous levels of ATP4B protein.
Antibody Type	Primary antibody
Immunogen	Recombinant fusion protein of human ATP4B
Purification	The antibody was purified by immunogen affinity chromatography.
Molecular Weight	Predicted: 33 kD; Observed: 35 kD
Form/Buffer	Liquid in 0.42% Potassium phosphate, 0.87% Sodium chloride, pH 7.3, 30% glycerol, and 0.01% sodium azide.
Alternative Names	Potassium-transporting ATPase subunit beta; Gastric H(+)/K(+) ATPase subunit beta; Proton pump beta chain
Gene Symbol	ATP4B
Entrez Gene	496(Human); 11945(Mouse); 24217(Rat)
SwissProt	P51164(Human); P50992(Mouse); P18598(Rat)

*AREX continuously optimizes our products. Webpage content may not reflect the latest updates. For inquiries, please contact info@arexbio.com or your local distributor.

*Clone Number, Reactivity, Source/Host and Clonality can be found in the product name and Key Features section above.

DATASHEET**ATP4B Rabbit Polyclonal Antibody**

CAT. NO. APA13848

DATA

Western blot analysis of ATP4B expression in SW620 (A), mouse liver (B), mouse heart (C), rat stomach (D) whole cell lysates. (Predicted band size: 33 kD; Observed band size: 35 kD)

STORAGE

Store at 4°C short term. For long term storage, store at -20°C, avoiding freeze/thaw cycles.

NOTE

For Research Use Only. Not for diagnostic, therapeutics, prophylactic or in vivo use.