

DATASHEET

Cytokeratin 9 Rabbit Polyclonal Antibody

CAT. NO. APA13849

KEY FEATURES

Target	Cytokeratin 9	Source / Host	Rabbit
Reactivity	Human, Mouse, Rat	Clonality	Polyclonal
Applications	WB	Conjugation	Unconjugated
Form / Buffer	Liquid in 0.42% Potassium phosphate, 0.87% Sodium chloride, pH 7.3, 30% glycerol, and 0.01% sodium azide.	Storage	at-20°C

BACKGROUND

May serve an important special function either in the mature palmar and plantar skin tissue or in the morphogenetic program of the formation of these tissues. Plays a role in keratin filament assembly.

APPLICATION

To ensure optimal assay performance, AREX recommends conducting reagent titration tailored to each testing system for optimal detection results.

WB	1:500 - 1:2000
----	----------------

*Results are sample-specific. Please refer to your local assay conditions and test parameters for reference.

PRODUCT OVERVIEW

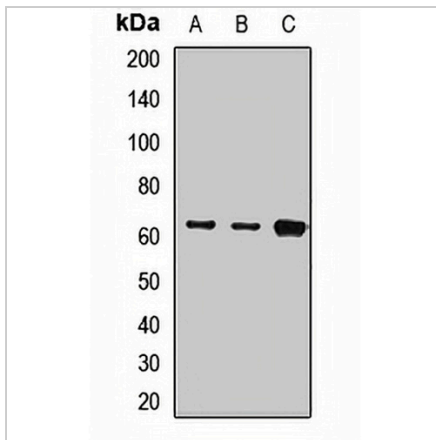
Description	Rabbit polyclonal antibody to Cytokeratin 9
Specificity	Recognizes endogenous levels of Cytokeratin 9 protein.
Antibody Type	Primary antibody
Immunogen	Recombinant fusion protein of human Cytokeratin 9
Purification	The antibody was purified by immunogen affinity chromatography.
Molecular Weight	Predicted: 62 kD; Observed: 62 kD
Form/Buffer	Liquid in 0.42% Potassium phosphate, 0.87% Sodium chloride, pH 7.3, 30% glycerol, and 0.01% sodium azide.
Alternative Names	Keratin, type I cytoskeletal 9; Cytokeratin-9; CK-9; Keratin-9; K9
Gene Symbol	KRT9
Entrez Gene	3857(Human); 107656(Mouse); 266717(Rat)
SwissProt	P35527(Human); Q6RHW0(Mouse); Q8CIS9(Rat)

*AREX continuously optimizes our products. Webpage content may not reflect the latest updates. For inquiries, please contact info@arexbio.com or your local distributor.

*Clone Number, Reactivity, Source/Host and Clonality can be found in the product name and Key Features section above.

DATASHEET**Cytokeratin 9 Rabbit Polyclonal Antibody**

CAT. NO. APA13849

DATA

Western blot analysis of Cytokeratin 9 expression in HeLa (A), mouse liver (B), rat testis (C) whole cell lysates. (Predicted band size: 62 kD; Observed band size: 62 kD)

STORAGE

Store at 4°C short term. For long term storage, store at -20°C, avoiding freeze/thaw cycles.

NOTE

For Research Use Only. Not for diagnostic, therapeutics, prophylactic or in vivo use.