

DATASHEET

AP1-mu-1 Rabbit Polyclonal Antibody

CAT. NO. APA13851

KEY FEATURES

Target	AP1-mu-1	Source / Host	Rabbit
Reactivity	Human, Mouse, Rat	Clonality	Polyclonal
Applications	WB	Conjugation	Unconjugated
Form / Buffer	Liquid in 0.42% Potassium phosphate, 0.87% Sodium chloride, pH 7.3, 30% glycerol, and 0.01% sodium azide.		Storage at-20°C

BACKGROUND

Subunit of clathrin-associated adaptor protein complex 1 that plays a role in protein sorting in the trans-Golgi network (TGN) and endosomes. The AP complexes mediate the recruitment of clathrin to membranes and the recognition of sorting signals within the cytosolic tails of transmembrane cargo molecules.

APPLICATION

To ensure optimal assay performance, AREX recommends conducting reagent titration tailored to each testing system for optimal detection results.

WB	1:500 - 1:2000
----	----------------

*Results are sample-specific. Please refer to your local assay conditions and test parameters for reference.

PRODUCT OVERVIEW

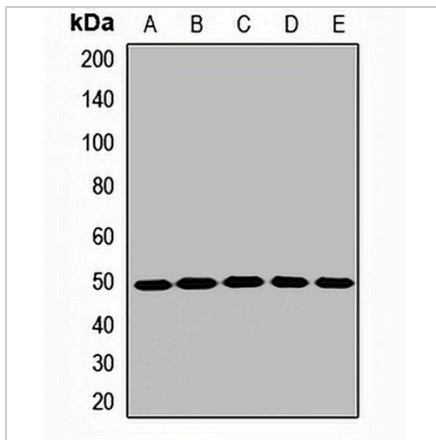
Description	Rabbit polyclonal antibody to AP1-mu-1
Specificity	Recognizes endogenous levels of AP1-mu-1 protein.
Antibody Type	Primary antibody
Immunogen	Recombinant fusion protein of human AP1-mu-1
Purification	The antibody was purified by immunogen affinity chromatography.
Molecular Weight	Predicted: 48; Observed: 48 kD
Form/Buffer	Liquid in 0.42% Potassium phosphate, 0.87% Sodium chloride, pH 7.3, 30% glycerol, and 0.01% sodium azide.
Alternative Names	CLTNM; AP-1 complex subunit mu-1; AP-mu chain family member mu1A; Adapter-related protein complex 1 subunit mu-1; Adaptor protein complex AP-1 subunit mu-1; Clathrin assembly protein complex 1 mu-1 medium chain 1; Clathrin coat assembly protein AP47; Clathrin coat-associated protein AP47; Golgi adaptor HA1/AP1 adaptin mu-1 subunit; Mu-adaptin 1; Mu1A-adaptin
Gene Symbol	AP1M1
Entrez Gene	8907(Human); 11767(Mouse); 306332(Rat)
SwissProt	Q9BXS5(Human); P35585(Mouse); Q32Q06(Rat)

*AREX continuously optimizes our products. Webpage content may not reflect the latest updates. For inquiries, please contact info@arexbio.com or your local distributor.

*Clone Number, Reactivity, Source/Host and Clonality can be found in the product name and Key Features section above.

DATASHEET**AP1-mu-1 Rabbit Polyclonal Antibody**

CAT. NO. APA13851

DATA

Western blot analysis of AP1-mu-1 expression in HepG2 (A), HL60 (B), mouse brain (C), mouse liver (D), rat testis (E) whole cell lysates. (Predicted band size: 48; 49 kD; Observed band size: 48 kD)

STORAGE

Store at 4°C short term. For long term storage, store at -20°C, avoiding freeze/thaw cycles.

NOTE

For Research Use Only. Not for diagnostic, therapeutics, prophylactic or in vivo use.