

DATASHEET

Syncytin-2 Rabbit Polyclonal Antibody

CAT. NO. APA13859

KEY FEATURES

| | | | |
|---------------|---|---------------|--------------------|
| Target | Syncytin-2 | Source / Host | Rabbit |
| Reactivity | Human, Mouse, Rat | Clonality | Polyclonal |
| Applications | WB | Conjugation | Unconjugated |
| Form / Buffer | Liquid in 0.42% Potassium phosphate, 0.87% Sodium chloride, pH 7.3, 30% glycerol, and 0.01% sodium azide. | | Storage at-20°C |

BACKGROUND

This endogenous retroviral envelope protein has retained its original fusogenic properties and participates in trophoblast fusion and the formation of a syncytium during placenta morphogenesis. The interaction with MFSD2A is apparently important for this process .

APPLICATION

To ensure optimal assay performance, AREX recommends conducting reagent titration tailored to each testing system for optimal detection results.

| | |
|----|----------------|
| WB | 1:500 - 1:2000 |
|----|----------------|

*Results are sample-specific. Please refer to your local assay conditions and test parameters for reference.

PRODUCT OVERVIEW

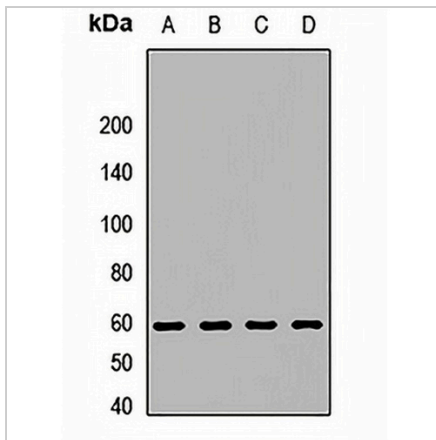
| | |
|-------------------|--|
| Description | Rabbit polyclonal antibody to Syncytin-2 |
| Specificity | Recognizes endogenous levels of Syncytin-2 protein. |
| Antibody Type | Primary antibody |
| Immunogen | Recombinant fusion protein of human Syncytin-2 |
| Purification | The antibody was purified by immunogen affinity chromatography. |
| Molecular Weight | Predicted: 59 kD; Observed: 60 kD |
| Form/Buffer | Liquid in 0.42% Potassium phosphate, 0.87% Sodium chloride, pH 7.3, 30% glycerol, and 0.01% sodium azide. |
| Alternative Names | ERVFRDE1; HERV-FRD_6p24.1 provirus ancestral Env polyprotein; Endogenous retrovirus group FRD member 1; Envelope polyprotein; HERV-FRD; Syncytin-2 |
| Gene Symbol | ERVFRD-1 |
| Entrez Gene | 405754(Human) |
| SwissProt | P60508(Human) |

*AREX continuously optimizes our products. Webpage content may not reflect the latest updates. For inquiries, please contact info@arexbio.com or your local distributor.

*Clone Number, Reactivity, Source/Host and Clonality can be found in the product name and Key Features section above.

DATASHEET**Syncytin-2 Rabbit Polyclonal Antibody**

CAT. NO. APA13859

DATA

Western blot analysis of Syncytin-2 expression in HT29 (A), A549 (B), K562 (C), mouse liver (D) whole cell lysates. (Predicted band size: 59 kD; Observed band size: 60 kD)

STORAGE

Store at 4°C short term. For long term storage, store at -20°C, avoiding freeze/thaw cycles.

NOTE

For Research Use Only. Not for diagnostic, therapeutics, prophylactic or in vivo use.