

DATASHEET

N-SMase2 Rabbit Polyclonal Antibody

CAT. NO. APA13863

KEY FEATURES

| | | | |
|---------------|---|---------------|--------------------|
| Target | N-SMase2 | Source / Host | Rabbit |
| Reactivity | Human, Mouse, Rat | Clonality | Polyclonal |
| Applications | WB | Conjugation | Unconjugated |
| Form / Buffer | Liquid in 0.42% Potassium phosphate, 0.87% Sodium chloride, pH 7.3, 30% glycerol, and 0.01% sodium azide. | | Storage at-20°C |

BACKGROUND

Catalyzes the hydrolysis of sphingomyelin to form ceramide and phosphocholine. Ceramide mediates numerous cellular functions, such as apoptosis and growth arrest, and is capable of regulating these 2 cellular events independently. Also hydrolyzes sphingosylphosphocholine. Regulates the cell cycle by acting as a growth suppressor in confluent cells. Probably acts as a regulator of postnatal development and participates in bone and dentin mineralization . Binds to anionic phospholipids (APLs) such as phosphatidylserine (PS) and phosphatidic acid (PA) that modulate enzymatic activity and subcellular location. May be involved in IL-1-beta-induced JNK activation in hepatocytes .

APPLICATION

To ensure optimal assay performance, AREX recommends conducting reagent titration tailored to each testing system for optimal detection results.

| | |
|----|----------------|
| WB | 1:500 - 1:2000 |
|----|----------------|

*Results are sample-specific. Please refer to your local assay conditions and test parameters for reference.

PRODUCT OVERVIEW

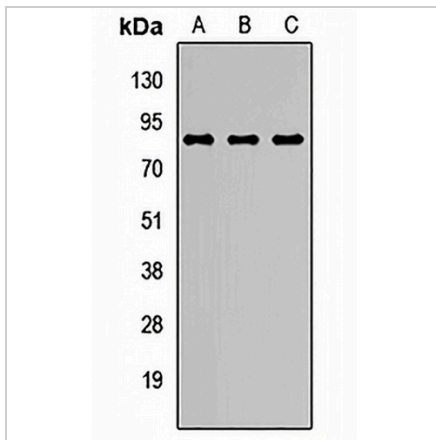
| | |
|-------------------|---|
| Description | Rabbit polyclonal antibody to N-SMase2 |
| Specificity | Recognizes endogenous levels of N-SMase2 protein. |
| Antibody Type | Primary antibody |
| Immunogen | Recombinant fusion protein of human N-SMase2 |
| Purification | The antibody was purified by immunogen affinity chromatography. |
| Molecular Weight | Predicted: 70; Observed: 80 kD |
| Form/Buffer | Liquid in 0.42% Potassium phosphate, 0.87% Sodium chloride, pH 7.3, 30% glycerol, and 0.01% sodium azide. |
| Alternative Names | Sphingomyelin phosphodiesterase 3; Neutral sphingomyelinase 2; nSMase-2; nSMase2; Neutral sphingomyelinase II |
| Gene Symbol | SMPD3 |
| Entrez Gene | 55512(Human); 58994(Mouse); 94338(Rat) |
| SwissProt | Q9NY59(Human); Q9JJY3(Mouse); O35049(Rat) |

*AREX continuously optimizes our products. Webpage content may not reflect the latest updates. For inquiries, please contact info@arexbio.com or your local distributor.

*Clone Number, Reactivity, Source/Host and Clonality can be found in the product name and Key Features section above.

DATASHEET**N-SMase2 Rabbit Polyclonal Antibody**

CAT. NO. APA13863

DATA

Western blot analysis of N-SMase2 expression in A549 (A), mouse brain (B), rat brain (C) whole cell lysates. (Predicted band size: 70; 71 kD; Observed band size: 80 kD)

STORAGE

Store at 4°C short term. For long term storage, store at -20°C, avoiding freeze/thaw cycles.

NOTE

For Research Use Only. Not for diagnostic, therapeutics, prophylactic or in vivo use.