

**DATASHEET**

**Envoplakin Rabbit Polyclonal Antibody**

CAT. NO. APA13865

**KEY FEATURES**

Target	Envoplakin	Source / Host	Rabbit
Reactivity	Human, Mouse, Rat	Clonality	Polyclonal
Applications	WB, IHC	Conjugation	Unconjugated
Form / Buffer	Liquid in 0.42% Potassium phosphate, 0.87% Sodium chloride, pH 7.3, 30% glycerol, and 0.01% sodium azide.		Storage at -20°C

**BACKGROUND**

Component of the cornified envelope of keratinocytes. May link the cornified envelope to desmosomes and intermediate filaments.

**APPLICATION**

To ensure optimal assay performance, AREX recommends conducting reagent titration tailored to each testing system for optimal detection results.

WB	1:500 - 1:2000
IHC	1:50 - 1:200

\*Results are sample-specific. Please refer to your local assay conditions and test parameters for reference.

**PRODUCT OVERVIEW**

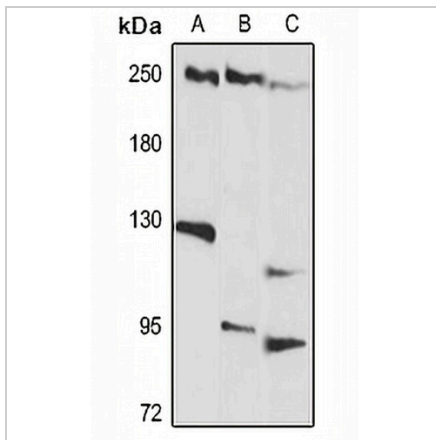
Description	Rabbit polyclonal antibody to Envoplakin
Specificity	Recognizes endogenous levels of Envoplakin protein.
Antibody Type	Primary antibody
Immunogen	Recombinant fusion protein of human Envoplakin
Purification	The antibody was purified by immunogen affinity chromatography.
Molecular Weight	Predicted: 231 kD; Observed: 270 kD
Form/Buffer	Liquid in 0.42% Potassium phosphate, 0.87% Sodium chloride, pH 7.3, 30% glycerol, and 0.01% sodium azide.
Alternative Names	Envoplakin; 210 kDa cornified envelope precursor protein; 210 kDa paraneoplastic pemphigus antigen; p210
Gene Symbol	EVPL
Entrez Gene	2125(Human); 14027(Mouse)
SwissProt	Q92817(Human); Q9D952(Mouse)

\*AREX continuously optimizes our products. Webpage content may not reflect the latest updates. For inquiries, please contact [info@arexbio.com](mailto:info@arexbio.com) or your local distributor.

\*Clone Number, Reactivity, Source/Host and Clonality can be found in the product name and Key Features section above.

**DATASHEET****Envoplakin Rabbit Polyclonal Antibody**

CAT. NO. APA13865

**DATA**

Western blot analysis of Envoplakin expression in HeLa (A), mouse lung (B), rat lung (C) whole cell lysates. (Predicted band size: 231 kD; Observed band size: 270 kD)

**STORAGE**

Store at 4°C short term. For long term storage, store at -20°C, avoiding freeze/thaw cycles.

**NOTE**

For Research Use Only. Not for diagnostic, therapeutics, prophylactic or in vivo use.