

DATASHEET

Glycogenin-1 Rabbit Polyclonal Antibody

CAT. NO. APA13866

KEY FEATURES

Target	Glycogenin-1	Source / Host	Rabbit
Reactivity	Human, Mouse, Rat	Clonality	Polyclonal
Applications	WB	Conjugation	Unconjugated
Form / Buffer	Liquid in 0.42% Potassium phosphate, 0.87% Sodium chloride, pH 7.3, 30% glycerol, and 0.01% sodium azide.		Storage at -20°C

BACKGROUND

Glycogenin participates in the glycogen biosynthetic process along with glycogen synthase and glycogen branching enzyme. It catalyzes the formation of a short alpha (1,4)-glucosyl chain covalently attached via a glucose 1-O-tyrosyl linkage to internal tyrosine residues and these chains act as primers for the elongation reaction catalyzed by glycogen synthase.

APPLICATION

To ensure optimal assay performance, AREX recommends conducting reagent titration tailored to each testing system for optimal detection results.

WB	1:500 - 1:2000
----	----------------

*Results are sample-specific. Please refer to your local assay conditions and test parameters for reference.

PRODUCT OVERVIEW

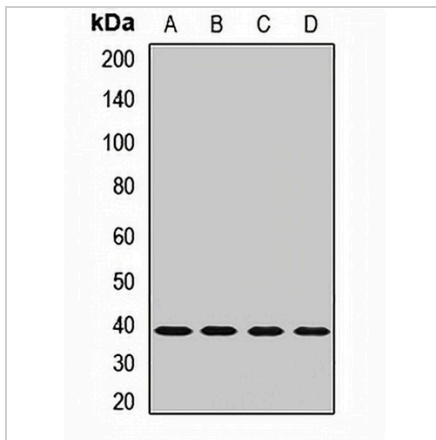
Description	Rabbit polyclonal antibody to Glycogenin-1
Specificity	Recognizes endogenous levels of Glycogenin-1 protein.
Antibody Type	Primary antibody
Immunogen	Recombinant fusion protein of human Glycogenin-1
Purification	The antibody was purified by immunogen affinity chromatography.
Molecular Weight	Predicted: 31; Observed: 39 kD
Form/Buffer	Liquid in 0.42% Potassium phosphate, 0.87% Sodium chloride, pH 7.3, 30% glycerol, and 0.01% sodium azide.
Alternative Names	GYG; Glycogenin-1; GN-1; GN1
Gene Symbol	GYG1
Entrez Gene	2992(Human); 27357(Mouse); 81675(Rat)
SwissProt	P46976(Human); Q9R062(Mouse); O08730(Rat)

*AREX continuously optimizes our products. Webpage content may not reflect the latest updates. For inquiries, please contact info@arexbio.com or your local distributor.

*Clone Number, Reactivity, Source/Host and Clonality can be found in the product name and Key Features section above.

DATASHEET**Glycogenin-1 Rabbit Polyclonal Antibody**

CAT. NO. APA13866

DATA

Western blot analysis of Glycogenin-1 expression in MCF7 (A), SW480 (B), mouse kidney (C), rat heart (D) whole cell lysates. (Predicted band size: 31; 37; 39 kD; Observed band size: 39 kD)

STORAGE

Store at 4°C short term. For long term storage, store at -20°C, avoiding freeze/thaw cycles.

NOTE

For Research Use Only. Not for diagnostic, therapeutics, prophylactic or in vivo use.