

DATASHEET

MAGP1 Rabbit Polyclonal Antibody

CAT. NO. APA13869

KEY FEATURES

Target	MAGP1	Source / Host	Rabbit
Reactivity	Human, Mouse, Rat	Clonality	Polyclonal
Applications	WB	Conjugation	Unconjugated
Form / Buffer	Liquid in 0.42% Potassium phosphate, 0.87% Sodium chloride, pH 7.3, 30% glycerol, and 0.01% sodium azide.	Storage	at-20°C

BACKGROUND

Component of the elastin-associated microfibrils.

APPLICATION

To ensure optimal assay performance, AREX recommends conducting reagent titration tailored to each testing system for optimal detection results.

WB	1:500 - 1:2000
----	----------------

*Results are sample-specific. Please refer to your local assay conditions and test parameters for reference.

PRODUCT OVERVIEW

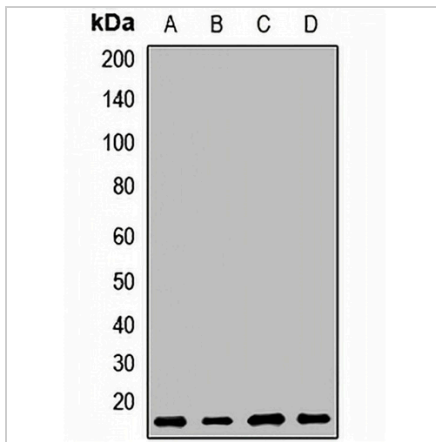
Description	Rabbit polyclonal antibody to MAGP1
Specificity	Recognizes endogenous levels of MAGP1 protein.
Antibody Type	Primary antibody
Immunogen	Recombinant full length protein of human MAGP1
Purification	The antibody was purified by immunogen affinity chromatography.
Molecular Weight	Predicted: 20 kD; Observed: 20 kD
Form/Buffer	Liquid in 0.42% Potassium phosphate, 0.87% Sodium chloride, pH 7.3, 30% glycerol, and 0.01% sodium azide.
Alternative Names	MAGP1; Microfibrillar-associated protein 2; MFAP-2; Microfibril-associated glycoprotein 1; MAGP; MAGP-1
Gene Symbol	MFAP2
Entrez Gene	4237(Human)
SwissProt	P55001(Human); P55002(Mouse)

*AREX continuously optimizes our products. Webpage content may not reflect the latest updates. For inquiries, please contact info@arexbio.com or your local distributor.

*Clone Number, Reactivity, Source/Host and Clonality can be found in the product name and Key Features section above.

DATASHEET**MAGP1 Rabbit Polyclonal Antibody**

CAT. NO. APA13869

DATA

Western blot analysis of MAGP1 expression in Hela (A), MCF7 (B), mouse brain (C), rat brain (D) whole cell lysates. (Predicted band size: 20 kD; Observed band size: 20 kD)

STORAGE

Store at 4°C short term. For long term storage, store at -20°C, avoiding freeze/thaw cycles.

NOTE

For Research Use Only. Not for diagnostic, therapeutics, prophylactic or in vivo use.