

DATASHEET

PCDH1 Rabbit Polyclonal Antibody

CAT. NO. APA13871

KEY FEATURES

Target	PCDH1	Source / Host	Rabbit
Reactivity	Human	Clonality	Polyclonal
Applications	WB	Conjugation	Unconjugated
Form / Buffer	Liquid in 0.42% Potassium phosphate, 0.87% Sodium chloride, pH 7.3, 30% glycerol, and 0.01% sodium azide.		Storage at -20°C

BACKGROUND

May be involved in cell-cell interaction processes and in cell adhesion.

APPLICATION

To ensure optimal assay performance, AREX recommends conducting reagent titration tailored to each testing system for optimal detection results.

WB	1:500 - 1:2000
----	----------------

*Results are sample-specific. Please refer to your local assay conditions and test parameters for reference.

PRODUCT OVERVIEW

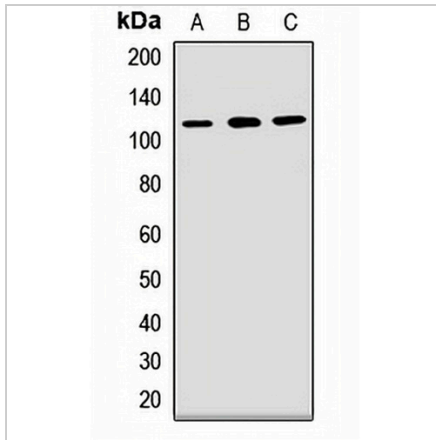
Description	Rabbit polyclonal antibody to PCDH1
Specificity	Recognizes endogenous levels of PCDH1 protein.
Antibody Type	Primary antibody
Immunogen	Recombinant fusion protein of human PCDH1
Purification	The antibody was purified by immunogen affinity chromatography.
Molecular Weight	Predicted: 114; Observed: 115 kD
Form/Buffer	Liquid in 0.42% Potassium phosphate, 0.87% Sodium chloride, pH 7.3, 30% glycerol, and 0.01% sodium azide.
Alternative Names	Protocadherin-1; Cadherin-like protein 1; Protocadherin-42; PC42
Gene Symbol	PCDH1
Entrez Gene	5097(Human)
SwissProt	Q08174(Human)

*AREX continuously optimizes our products. Webpage content may not reflect the latest updates. For inquiries, please contact info@arexbio.com or your local distributor.

*Clone Number, Reactivity, Source/Host and Clonality can be found in the product name and Key Features section above.

DATASHEET**PCDH1 Rabbit Polyclonal Antibody**

CAT. NO. APA13871

DATA

Western blot analysis of PCDH1 expression in HeLa (A), SW480 (B), BT474 (C) whole cell lysates. (Predicted band size: 114; 133 kD; Observed band size: 115 kD)

STORAGE

Store at 4°C short term. For long term storage, store at -20°C, avoiding freeze/thaw cycles.

NOTE

For Research Use Only. Not for diagnostic, therapeutics, prophylactic or in vivo use.