

**DATASHEET**

**CTP Rabbit Polyclonal Antibody**

CAT. NO. APA13874

**KEY FEATURES**

Target	CTP	Source / Host	Rabbit
Reactivity	Human, Mouse, Rat	Clonality	Polyclonal
Applications	WB	Conjugation	Unconjugated
Form / Buffer	Liquid in 0.42% Potassium phosphate, 0.87% Sodium chloride, pH 7.3, 30% glycerol, and 0.01% sodium azide.		Storage at-20°C

**BACKGROUND**

Mitochondrial electroneutral antiporter that exports citrate from the mitochondria into the cytosol in exchange for malate . Also able to mediate the exchange of citrate for isocitrate, phosphoenolpyruvate, cis-aconitate and to a lesser extent trans-aconitate, maleate and succinate . Substrate exchange across the membrane occurs consecutively with one substrate being transported first, then dissociating from the substrate binding site before the second substrate binds for transport in the opposite direction . In the cytoplasm, citrate plays important roles in fatty acid and sterol synthesis, regulation of glycolysis, protein acetylation, and other physiopathological processes .

**APPLICATION**

To ensure optimal assay performance, AREX recommends conducting reagent titration tailored to each testing system for optimal detection results.

WB	1:500 - 1:1000
----	----------------

\*Results are sample-specific. Please refer to your local assay conditions and test parameters for reference.

**PRODUCT OVERVIEW**

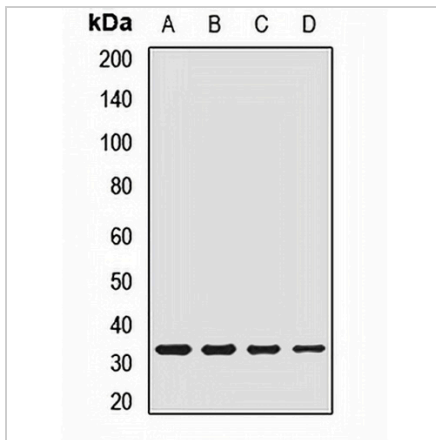
Description	Rabbit polyclonal antibody to CTP
Specificity	Recognizes endogenous levels of CTP protein.
Antibody Type	Primary antibody
Immunogen	Recombinant fusion protein of human CTP
Purification	The antibody was purified by immunogen affinity chromatography.
Molecular Weight	Predicted: 34 kD; Observed: 34 kD
Form/Buffer	Liquid in 0.42% Potassium phosphate, 0.87% Sodium chloride, pH 7.3, 30% glycerol, and 0.01% sodium azide.
Alternative Names	SLC20A3; Tricarboxylate transport protein mitochondrial; Citrate transport protein; CTP; Solute carrier family 25 member 1; Tricarboxylate carrier protein
Gene Symbol	SLC25A1
Entrez Gene	6576(Human); 29743(Rat)
SwissProt	P53007(Human); P32089(Rat)

\*AREX continuously optimizes our products. Webpage content may not reflect the latest updates. For inquiries, please contact [info@arexbio.com](mailto:info@arexbio.com) or your local distributor.

\*Clone Number, Reactivity, Source/Host and Clonality can be found in the product name and Key Features section above.

**DATASHEET****CTP Rabbit Polyclonal Antibody**

CAT. NO. APA13874

**DATA**

Western blot analysis of CTP expression in LO2 (A), BT474 (B), mouse brain (C), rat liver (D) whole cell lysates. (Predicted band size: 34 kD; Observed band size: 34 kD)

**STORAGE**

Store at 4°C short term. For long term storage, store at -20°C, avoiding freeze/thaw cycles.

**NOTE**

For Research Use Only. Not for diagnostic, therapeutics, prophylactic or in vivo use.