

DATASHEET

SNF2L Rabbit Polyclonal Antibody

CAT. NO. APA13875

KEY FEATURES

Target	SNF2L	Source / Host	Rabbit
Reactivity	Human, Mouse	Clonality	Polyclonal
Applications	WB	Conjugation	Unconjugated
Form / Buffer	Liquid in 0.42% Potassium phosphate, 0.87% Sodium chloride, pH 7.3, 30% glycerol, and 0.01% sodium azide.		Storage at -20°C

BACKGROUND

ATPase that possesses intrinsic ATP-dependent chromatin-remodeling activity . ATPase activity is substrate-dependent, and is increased when nucleosomes are the substrate, but is also catalytically active when DNA alone is the substrate . Catalytic subunit of ISWI chromatin-remodeling complexes, which form ordered nucleosome arrays on chromatin and facilitate access to DNA during DNA-templated processes such as DNA replication, transcription, and repair . Within the ISWI chromatin-remodeling complexes, slides edge- and center-positioned histone octamers away from their original location on the DNA template . Catalytic activity and histone octamer sliding propensity is regulated and determined by components of the ISWI chromatin-remodeling complexes .

APPLICATION

To ensure optimal assay performance, AREX recommends conducting reagent titration tailored to each testing system for optimal detection results.

WB	1:500 - 1:2000
----	----------------

*Results are sample-specific. Please refer to your local assay conditions and test parameters for reference.

PRODUCT OVERVIEW

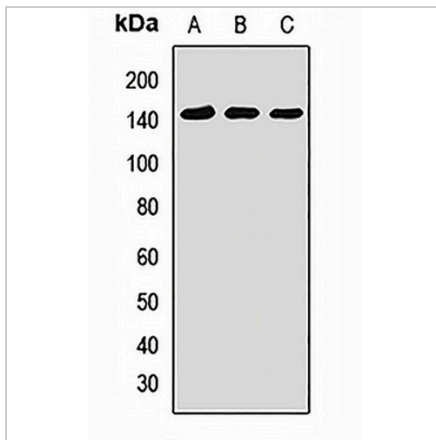
Description	Rabbit polyclonal antibody to SNF2L
Specificity	Recognizes endogenous levels of SNF2L protein.
Antibody Type	Primary antibody
Immunogen	Recombinant fusion protein of human SNF2L
Purification	The antibody was purified by immunogen affinity chromatography.
Molecular Weight	Predicted: 121; Observed: 140 kD
Form/Buffer	Liquid in 0.42% Potassium phosphate, 0.87% Sodium chloride, pH 7.3, 30% glycerol, and 0.01% sodium azide.
Alternative Names	SNF2L; SNF2L1; Probable global transcription activator SNF2L1; ATP-dependent helicase SMARCA1; Nucleosome-remodeling factor subunit SNF2L; SWI/SNF-related matrix-associated actin-dependent regulator of chromatin subfamily A member 1
Gene Symbol	SMARCA1
Entrez Gene	6594(Human); 93761(Mouse)
SwissProt	P28370(Human); Q6PGB8(Mouse)

*AREX continuously optimizes our products. Webpage content may not reflect the latest updates. For inquiries, please contact info@arexbio.com or your local distributor.

*Clone Number, Reactivity, Source/Host and Clonality can be found in the product name and Key Features section above.

DATASHEET**SNF2L Rabbit Polyclonal Antibody**

CAT. NO. APA13875

DATA

Western blot analysis of SNF2L expression in HeLa (A), A549 (B), HT1080 (C) whole cell lysates. (Predicted band size: 121; 122 kD; Observed band size: 140 kD)

STORAGE

Store at 4°C short term. For long term storage, store at -20°C, avoiding freeze/thaw cycles.

NOTE

For Research Use Only. Not for diagnostic, therapeutics, prophylactic or in vivo use.