

DATASHEET

XPNPEP2 Rabbit Polyclonal Antibody

CAT. NO. APA13878

KEY FEATURES

Target	XPNPEP2	Source / Host	Rabbit
Reactivity	Human, Mouse, Rat	Clonality	Polyclonal
Applications	WB	Conjugation	Unconjugated
Form / Buffer	Liquid in 0.42% Potassium phosphate, 0.87% Sodium chloride, pH 7.3, 30% glycerol, and 0.01% sodium azide.	Storage	at-20°C

BACKGROUND

Membrane-bound metalloprotease which catalyzes the removal of a penultimate prolyl residue from the N-termini of peptides, such as Arg-Pro-Pro. May play a role in the metabolism of the vasodilator bradykinin.

APPLICATION

To ensure optimal assay performance, AREX recommends conducting reagent titration tailored to each testing system for optimal detection results.

WB	1:500 - 1:2000
----	----------------

*Results are sample-specific. Please refer to your local assay conditions and test parameters for reference.

PRODUCT OVERVIEW

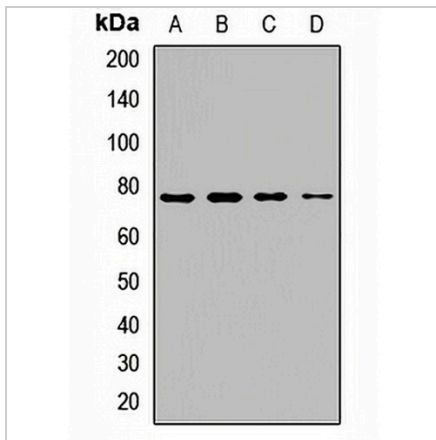
Description	Rabbit polyclonal antibody to XPNPEP2
Specificity	Recognizes endogenous levels of XPNPEP2 protein.
Antibody Type	Primary antibody
Immunogen	Recombinant fusion protein of human XPNPEP2
Purification	The antibody was purified by immunogen affinity chromatography.
Molecular Weight	Predicted: 75 kD; Observed: 76 kD
Form/Buffer	Liquid in 0.42% Potassium phosphate, 0.87% Sodium chloride, pH 7.3, 30% glycerol, and 0.01% sodium azide.
Alternative Names	Xaa-Pro aminopeptidase 2; Aminoacylproline aminopeptidase; Membrane-bound aminopeptidase P; Membrane-bound APP; Membrane-bound AmP; mAmP; X-Pro aminopeptidase 2
Gene Symbol	XPNPEP2
Entrez Gene	7512(Human)
SwissProt	O43895(Human)

*AREX continuously optimizes our products. Webpage content may not reflect the latest updates. For inquiries, please contact info@arexbio.com or your local distributor.

*Clone Number, Reactivity, Source/Host and Clonality can be found in the product name and Key Features section above.

DATASHEET**XPNPEP2 Rabbit Polyclonal Antibody**

CAT. NO. APA13878

DATA

Western blot analysis of XPNPEP2 expression in A549 (A), HT29 (B), mouse heart (C), rat kidney (D) whole cell lysates. (Predicted band size: 75 kD; Observed band size: 76 kD)

STORAGE

Store at 4°C short term. For long term storage, store at -20°C, avoiding freeze/thaw cycles.

NOTE

For Research Use Only. Not for diagnostic, therapeutics, prophylactic or in vivo use.