

## DATASHEET

# EIF3B Rabbit Polyclonal Antibody

CAT. NO. APA13879

### KEY FEATURES

Target	EIF3B	Source / Host	Rabbit
Reactivity	Human, Mouse, Rat	Clonality	Polyclonal
Applications	WB, IF/ICC	Conjugation	Unconjugated
Form / Buffer	Liquid in 0.42% Potassium phosphate, 0.87% Sodium chloride, pH 7.3, 30% glycerol, and 0.01% sodium azide.		Storage at -20°C

### BACKGROUND

RNA-binding component of the eukaryotic translation initiation factor 3 (eIF-3) complex, which is required for several steps in the initiation of protein synthesis complex, which is required for several steps in the initiation of protein synthesis. The eIF-3 complex associates with the 40S ribosome and facilitates the recruitment of eIF-1, eIF-1A, eIF-2:GTP:methionyl-tRNA<sup>i</sup> and eIF-5 to form the 43S pre-initiation complex (43S PIC). The eIF-3 complex stimulates mRNA recruitment to the 43S PIC and scanning of the mRNA for AUG recognition. The eIF-3 complex is also required for disassembly and recycling of post-termination ribosomal complexes and subsequently prevents premature joining of the 40S and 60S ribosomal subunits prior to initiation.

### APPLICATION

To ensure optimal assay performance, AREX recommends conducting reagent titration tailored to each testing system for optimal detection results.

WB	1:500 - 1:1000
IF/ICC	1:50 - 1:200

\*Results are sample-specific. Please refer to your local assay conditions and test parameters for reference.

### PRODUCT OVERVIEW

Description	Rabbit polyclonal antibody to EIF3B
Specificity	Recognizes endogenous levels of EIF3B protein.
Antibody Type	Primary antibody
Immunogen	Recombinant fusion protein of human EIF3B
Purification	The antibody was purified by immunogen affinity chromatography.
Molecular Weight	Predicted: 92; Observed: 125 kD
Form/Buffer	Liquid in 0.42% Potassium phosphate, 0.87% Sodium chloride, pH 7.3, 30% glycerol, and 0.01% sodium azide.
Alternative Names	EIF3S9; Eukaryotic translation initiation factor 3 subunit B; eIF3b; Eukaryotic translation initiation factor 3 subunit 9; Prt1 homolog; hPrt1; eIF-3-eta; eIF3 p110; eIF3 p116
Gene Symbol	EIF3B
Entrez Gene	8662(Human); 27979(Mouse); 288516(Rat)
SwissProt	P55884(Human); Q8JZQ9(Mouse); Q4G061(Rat)

\*AREX continuously optimizes our products. Webpage content may not reflect the latest updates. For inquiries, please contact [info@arexbio.com](mailto:info@arexbio.com) or your local distributor.

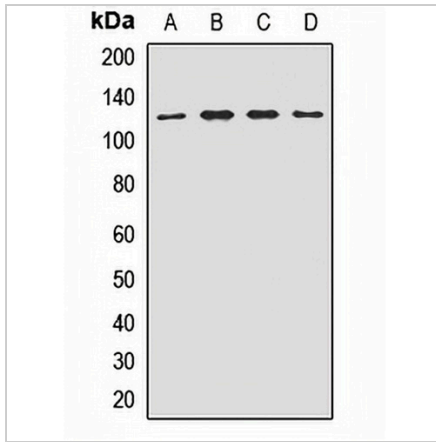
\*Clone Number, Reactivity, Source/Host and Clonality can be found in the product name and Key Features section above.

**DATASHEET**

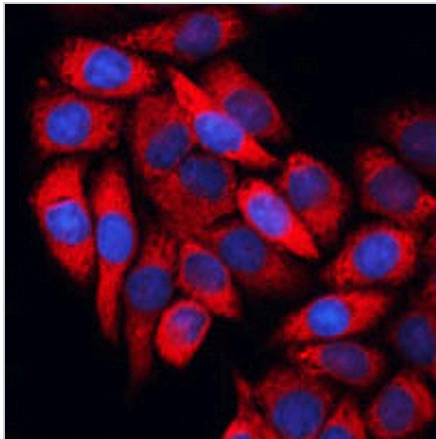
**EIF3B Rabbit Polyclonal Antibody**

CAT. NO. APA13879

**DATA**



Western blot analysis of EIF3B expression in HeLa (A), Jurkat (B), NIH3T3 (C), rat thymus (D) whole cell lysates. (Predicted band size: 92; 99 kD; Observed band size: 125 kD)



Immunofluorescent analysis of EIF3B staining in HeLa cells. Formalin-fixed cells were permeabilized with 0.1% Triton X-100 in TBS for 5-10 minutes and blocked with 3% BSA-PBS for 30 minutes at room temperature. Cells were probed with the primary antibody in 3% BSA-PBS and incubated overnight at 4 °C in a humidified chamber. Cells were washed with PBST and incubated with a AREX® Fluor 594-conjugated secondary antibody (red) in PBS at room temperature in the dark. DAPI was used to stain the cell nuclei (blue).

**STORAGE**

Store at 4°C short term. For long term storage, store at -20°C, avoiding freeze/thaw cycles.

**NOTE**

For Research Use Only. Not for diagnostic, therapeutics, prophylactic or in vivo use.