

DATASHEET

14-3-3 sigma Rabbit Polyclonal Antibody

CAT. NO. APA13880

KEY FEATURES

Target	14-3-3 sigma	Source / Host	Rabbit
Reactivity	Human, Mouse, Rat	Clonality	Polyclonal
Applications	WB, IHC, IF/ICC	Conjugation	Unconjugated
Form / Buffer	Liquid in 0.42% Potassium phosphate, 0.87% Sodium chloride, pH 7.3, 30% glycerol, and 0.01% sodium azide.		Storage at -20°C

BACKGROUND

Adapter protein implicated in the regulation of a large spectrum of both general and specialized signaling pathways . Binds to a large number of partners, usually by recognition of a phosphoserine or phosphothreonine motif . Binding generally results in the modulation of the activity of the binding partner . Promotes cytosolic retention of GBP1 GTPase by binding to phosphorylated GBP1, thereby inhibiting the innate immune response . Also acts as a TP53/p53-regulated inhibitor of G2/M progression . When bound to KRT17, regulates protein synthesis and epithelial cell growth by stimulating Akt/mTOR pathway .

APPLICATION

To ensure optimal assay performance, AREX recommends conducting reagent titration tailored to each testing system for optimal detection results.

WB	1:500 - 1:2000
IHC	1:50 - 1:200
IF/ICC	1:50 - 1:200

*Results are sample-specific. Please refer to your local assay conditions and test parameters for reference.

PRODUCT OVERVIEW

Description	Rabbit polyclonal antibody to 14-3-3 sigma
Specificity	Recognizes endogenous levels of 14-3-3 sigma protein.
Antibody Type	Primary antibody
Immunogen	Recombinant fusion protein of human 14-3-3 sigma
Purification	The antibody was purified by immunogen affinity chromatography.
Molecular Weight	Predicted: 27 kD; Observed: 28 kD
Form/Buffer	Liquid in 0.42% Potassium phosphate, 0.87% Sodium chloride, pH 7.3, 30% glycerol, and 0.01% sodium azide.
Alternative Names	HME1; 14-3-3 protein sigma; Epithelial cell marker protein 1; Stratifin
Gene Symbol	SFN
Entrez Gene	2810(Human); 55948(Mouse)
SwissProt	P31947(Human); O70456(Mouse)

*AREX continuously optimizes our products. Webpage content may not reflect the latest updates. For inquiries, please contact info@arexbio.com or your local distributor.

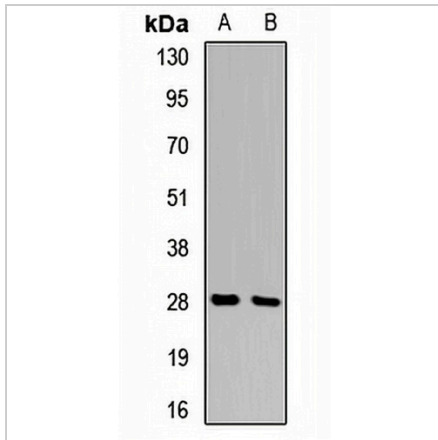
*Clone Number, Reactivity, Source/Host and Clonality can be found in the product name and Key Features section above.

DATASHEET

14-3-3 sigma Rabbit Polyclonal Antibody

CAT. NO. APA13880

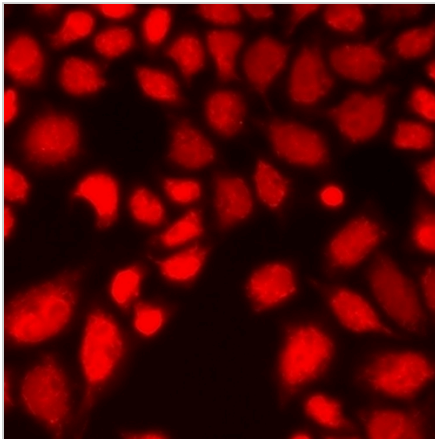
DATA



Western blot analysis of 14-3-3 sigma expression in HT29 (A), MCF7 (B) whole cell lysates. (Predicted band size: 27 kD; Observed band size: 28 kD)

Data 2

Immunohistochemical analysis of 14-3-3 sigma staining in human lung cancer formalin fixed paraffin embedded tissue section. The section was pre-treated using heat mediated antigen retrieval with sodium citrate buffer (pH 6.0). The section was then incubated with the antibody at room temperature and detected using an HRP conjugated compact polymer system. DAB was used as the chromogen. The section was then counterstained with haematoxylin and mounted with DPX.



Immunofluorescent analysis of 14-3-3 sigma staining in MCF7 cells. Formalin-fixed cells were permeabilized with 0.1% Triton X-100 in TBS for 5-10 minutes and blocked with 3% BSA-PBS for 30 minutes at room temperature. Cells were probed with the primary antibody in 3% BSA-PBS and incubated overnight at 4 °C in a humidified chamber. Cells were washed with PBST and incubated with a DyLight 594-conjugated secondary antibody (red) in PBS at room temperature in the dark.

STORAGE

Store at 4°C short term. For long term storage, store at -20°C, avoiding freeze/thaw cycles.

NOTE

For Research Use Only. Not for diagnostic, therapeutics, prophylactic or in vivo use.