

**DATASHEET**

**KIF14 Rabbit Polyclonal Antibody**

CAT. NO. APA13885

**KEY FEATURES**

Target	KIF14	Source / Host	Rabbit
Reactivity	Human	Clonality	Polyclonal
Applications	WB, IHC, IF/ICC	Conjugation	Unconjugated
Form / Buffer	Liquid in 0.42% Potassium phosphate, 0.87% Sodium chloride, pH 7.3, 30% glycerol, and 0.01% sodium azide.		Storage at -20°C

**BACKGROUND**

Microtubule motor protein that binds to microtubules with high affinity through each tubulin heterodimer and has an ATPase activity . Plays a role in many processes like cell division, cytokinesis and also in cell proliferation and apoptosis . During cytokinesis, targets to central spindle and midbody through its interaction with PRC1 and CIT respectively . Regulates cell growth through regulation of cell cycle progression and cytokinesis . During cell cycle progression acts through SCF-dependent proteasomal ubiquitin-dependent protein catabolic process which controls CDKN1B degradation, resulting in positive regulation of cyclins, including CCNE1, CCND1 and CCNB1 .

**APPLICATION**

To ensure optimal assay performance, AREX recommends conducting reagent titration tailored to each testing system for optimal detection results.

WB	1:500 - 1:2000
IHC	1:50 - 1:200
IF/ICC	1:50 - 1:200

\*Results are sample-specific. Please refer to your local assay conditions and test parameters for reference.

**PRODUCT OVERVIEW**

Description	Rabbit polyclonal antibody to KIF14
Specificity	Recognizes endogenous levels of KIF14 protein.
Antibody Type	Primary antibody
Immunogen	Recombinant fusion protein of human KIF14
Purification	The antibody was purified by immunogen affinity chromatography.
Molecular Weight	Predicted: 186 kD; Observed: 190 kD
Form/Buffer	Liquid in 0.42% Potassium phosphate, 0.87% Sodium chloride, pH 7.3, 30% glycerol, and 0.01% sodium azide.
Alternative Names	KIAA0042; Kinesin-like protein KIF14
Gene Symbol	KIF14
Entrez Gene	9928(Human)
SwissProt	Q15058(Human)

\*AREX continuously optimizes our products. Webpage content may not reflect the latest updates. For inquiries, please contact [info@arexbio.com](mailto:info@arexbio.com) or your local distributor.

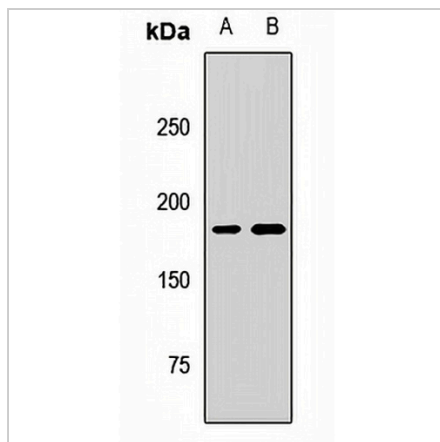
\*Clone Number, Reactivity, Source/Host and Clonality can be found in the product name and Key Features section above.

**DATASHEET**

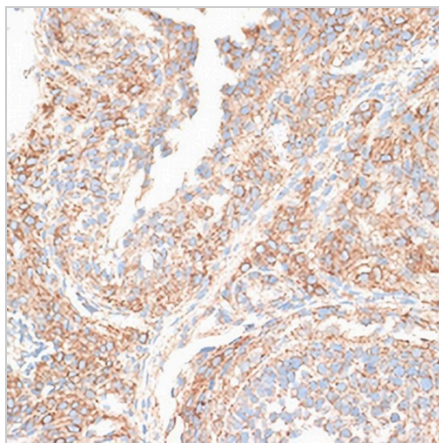
**KIF14 Rabbit Polyclonal Antibody**

CAT. NO. APA13885

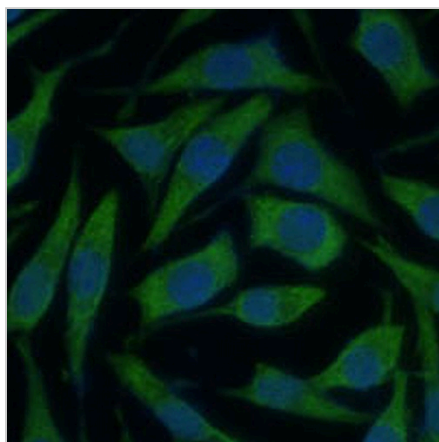
**DATA**



Western blot analysis of KIF14 expression in HeLa (A), HL60 (B) whole cell lysates. (Predicted band size: 186 kD; Observed band size: 190 kD)



Immunohistochemical analysis of KIF14 staining in rat ovary formalin fixed paraffin embedded tissue section. The section was pre-treated using heat mediated antigen retrieval with sodium citrate buffer (pH 6.0). The section was then incubated with the antibody at room temperature and detected using an HRP conjugated compact polymer system. DAB was used as the chromogen. The section was then counterstained with haematoxylin and mounted with DPX.



Immunofluorescent analysis of KIF14 staining in L929 cells. Formalin-fixed cells were permeabilized with 0.1% Triton X-100 in TBS for 5-10 minutes and blocked with 3% BSA-PBS for 30 minutes at room temperature. Cells were probed with the primary antibody in 3% BSA-PBS and incubated overnight at 4 °C in a humidified chamber. Cells were washed with PBST and incubated with a AREX® Fluor 488 -conjugated secondary antibody (green) in PBS at room temperature in the dark. DAPI was used to stain the cell nuclei (blue).

**STORAGE**

Store at 4°C short term. For long term storage, store at -20°C, avoiding freeze/thaw cycles.

**NOTE**

For Research Use Only. Not for diagnostic, therapeutics, prophylactic or in vivo use.