

DATASHEET

POMT1 Rabbit Polyclonal Antibody

CAT. NO. APA13887

KEY FEATURES

Target	POMT1	Source / Host	Rabbit
Reactivity	Human, Mouse	Clonality	Polyclonal
Applications	WB	Conjugation	Unconjugated
Form / Buffer	Liquid in 0.42% Potassium phosphate, 0.87% Sodium chloride, pH 7.3, 30% glycerol, and 0.01% sodium azide.		Storage at -20°C

BACKGROUND

Transfers mannosyl residues to the hydroxyl group of serine or threonine residues. Coexpression of both POMT1 and POMT2 is necessary for enzyme activity, expression of either POMT1 or POMT2 alone is insufficient. Essentially dedicated to O-mannosylation of alpha-DAG1 and few other proteins but not of cadherins and protocadherins.

APPLICATION

To ensure optimal assay performance, AREX recommends conducting reagent titration tailored to each testing system for optimal detection results.

WB	1:500 - 1:2000
----	----------------

*Results are sample-specific. Please refer to your local assay conditions and test parameters for reference.

PRODUCT OVERVIEW

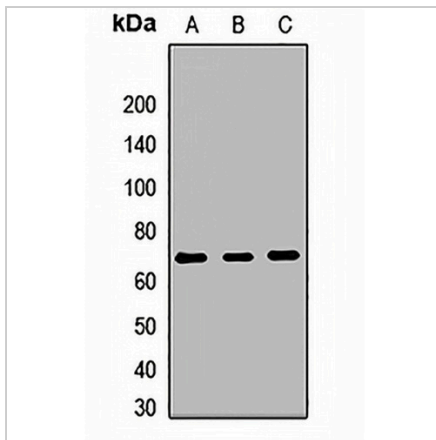
Description	Rabbit polyclonal antibody to POMT1
Specificity	Recognizes endogenous levels of POMT1 protein.
Antibody Type	Primary antibody
Immunogen	Recombinant fusion protein of human POMT1
Purification	The antibody was purified by immunogen affinity chromatography.
Molecular Weight	Predicted: 69; Observed: 69 kD
Form/Buffer	Liquid in 0.42% Potassium phosphate, 0.87% Sodium chloride, pH 7.3, 30% glycerol, and 0.01% sodium azide.
Alternative Names	Protein O-mannosyl-transferase 1; Dolichyl-phosphate-mannose--protein mannosyltransferase 1
Gene Symbol	POMT1
Entrez Gene	10585(Human); 99011(Mouse)
SwissProt	Q9Y6A1(Human); Q8R2R1(Mouse)

*AREX continuously optimizes our products. Webpage content may not reflect the latest updates. For inquiries, please contact info@arexbio.com or your local distributor.

*Clone Number, Reactivity, Source/Host and Clonality can be found in the product name and Key Features section above.

DATASHEET**POMT1 Rabbit Polyclonal Antibody**

CAT. NO. APA13887

DATA

Western blot analysis of POMT1 expression in SW480 (A), HeLa (B), mouse kidney (C) whole cell lysates. (Predicted band size: 69; 76; 82; 84 kD; Observed band size: 69 kD)

STORAGE

Store at 4°C short term. For long term storage, store at -20°C, avoiding freeze/thaw cycles.

NOTE

For Research Use Only. Not for diagnostic, therapeutics, prophylactic or in vivo use.