

DATASHEET

BICD2 Rabbit Polyclonal Antibody

CAT. NO. APA13889

KEY FEATURES

Target	BICD2	Source / Host	Rabbit
Reactivity	Human, Mouse, Rat	Clonality	Polyclonal
Applications	WB	Conjugation	Unconjugated
Form / Buffer	Liquid in 0.42% Potassium phosphate, 0.87% Sodium chloride, pH 7.3, 30% glycerol, and 0.01% sodium azide.		Storage at -20°C

BACKGROUND

Acts as an adapter protein linking the dynein motor complex to various cargos and converts dynein from a non-processive to a highly processive motor in the presence of dynactin. Facilitates and stabilizes the interaction between dynein and dynactin and activates dynein processivity (the ability to move along a microtubule for a long distance without falling off the track) . Facilitates the binding of RAB6A to the Golgi by stabilizing its GTP-bound form. Regulates coat complex coatamer protein I (COPI)-independent Golgi-endoplasmic reticulum transport via its interaction with RAB6A and recruitment of the dynein-dynactin motor complex . Contributes to nuclear and centrosomal positioning prior to mitotic entry through regulation of both dynein and kinesin-1.

APPLICATION

To ensure optimal assay performance, AREX recommends conducting reagent titration tailored to each testing system for optimal detection results.

WB	1:500 - 1:2000
----	----------------

*Results are sample-specific. Please refer to your local assay conditions and test parameters for reference.

PRODUCT OVERVIEW

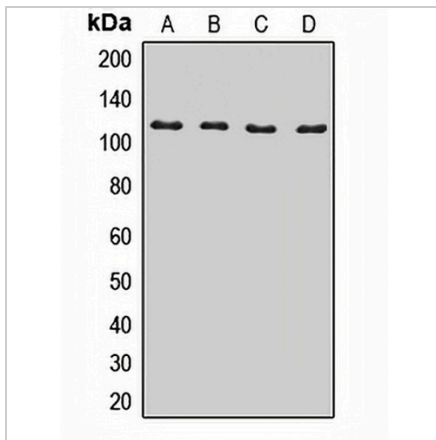
Description	Rabbit polyclonal antibody to BICD2
Specificity	Recognizes endogenous levels of BICD2 protein.
Antibody Type	Primary antibody
Immunogen	Recombinant fusion protein of human BICD2
Purification	The antibody was purified by immunogen affinity chromatography.
Molecular Weight	Predicted: 93; Observed: 118 kD
Form/Buffer	Liquid in 0.42% Potassium phosphate, 0.87% Sodium chloride, pH 7.3, 30% glycerol, and 0.01% sodium azide.
Alternative Names	KIAA0699; Protein bicaudal D homolog 2; Bic-D 2
Gene Symbol	BICD2
Entrez Gene	23299(Human); 76895(Mouse)
SwissProt	Q8TD16(Human); Q921C5(Mouse)

*AREX continuously optimizes our products. Webpage content may not reflect the latest updates. For inquiries, please contact info@arexbio.com or your local distributor.

*Clone Number, Reactivity, Source/Host and Clonality can be found in the product name and Key Features section above.

DATASHEET**BICD2 Rabbit Polyclonal Antibody**

CAT. NO. APA13889

DATA

Western blot analysis of BICD2 expression in HL60 (A), HeLa (B), mouse brain (C), rat brain (D) whole cell lysates. (Predicted band size: 93; 96 kD; Observed band size: 118 kD)

STORAGE

Store at 4°C short term. For long term storage, store at -20°C, avoiding freeze/thaw cycles.

NOTE

For Research Use Only. Not for diagnostic, therapeutics, prophylactic or in vivo use.