

DATASHEET

Snapin Rabbit Polyclonal Antibody

CAT. NO. APA13891

KEY FEATURES

Target	Snapin	Source / Host	Rabbit
Reactivity	Human, Mouse, Rat	Clonality	Polyclonal
Applications	WB	Conjugation	Unconjugated
Form / Buffer	Liquid in 0.42% Potassium phosphate, 0.87% Sodium chloride, pH 7.3, 30% glycerol, and 0.01% sodium azide.		Storage at -20°C

BACKGROUND

Component of the BLOC-1 complex, a complex that is required for normal biogenesis of lysosome-related organelles (LRO), such as platelet dense granules and melanosomes. In concert with the AP-3 complex, the BLOC-1 complex is required to target membrane protein cargos into vesicles assembled at cell bodies for delivery into neurites and nerve terminals. The BLOC-1 complex, in association with SNARE proteins, is also proposed to be involved in neurite extension. Plays a role in intracellular vesicle trafficking and synaptic vesicle recycling. May modulate a step between vesicle priming, fusion and calcium-dependent neurotransmitter release through its ability to potentiate the interaction of synaptotagmin with the SNAREs and the plasma-membrane-associated protein SNAP25.

APPLICATION

To ensure optimal assay performance, AREX recommends conducting reagent titration tailored to each testing system for optimal detection results.

WB	1:500 - 1:2000
----	----------------

*Results are sample-specific. Please refer to your local assay conditions and test parameters for reference.

PRODUCT OVERVIEW

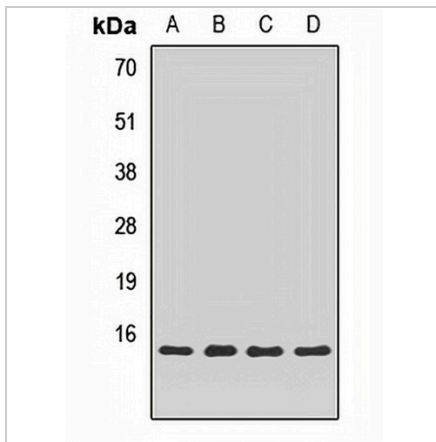
Description	Rabbit polyclonal antibody to Snapin
Specificity	Recognizes endogenous levels of Snapin protein.
Antibody Type	Primary antibody
Immunogen	Recombinant fusion protein of human Snapin
Purification	The antibody was purified by immunogen affinity chromatography.
Molecular Weight	Predicted: 14 kD; Observed: 15 kD
Form/Buffer	Liquid in 0.42% Potassium phosphate, 0.87% Sodium chloride, pH 7.3, 30% glycerol, and 0.01% sodium azide.
Alternative Names	BLOC1S7; SNAP25BP; SNAPAP; SNARE-associated protein Snapin; Biogenesis of lysosome-related organelles complex 1 subunit 7; BLOC-1 subunit 7; Synaptosomal-associated protein 25-binding protein; SNAP-associated protein
Gene Symbol	SNAPIN
Entrez Gene	23557(Human); 20615(Mouse); 295217(Rat)
SwissProt	O95295(Human); Q9Z266(Mouse); P60192(Rat)

*AREX continuously optimizes our products. Webpage content may not reflect the latest updates. For inquiries, please contact info@arexbio.com or your local distributor.

*Clone Number, Reactivity, Source/Host and Clonality can be found in the product name and Key Features section above.

DATASHEET**Snapin Rabbit Polyclonal Antibody**

CAT. NO. APA13891

DATA

Western blot analysis of Snapin expression in HeLa (A), Jurkat (B), mouse lung (C), rat kidney (D) whole cell lysates. (Predicted band size: 14 kD; Observed band size: 15 kD)

STORAGE

Store at 4°C short term. For long term storage, store at -20°C, avoiding freeze/thaw cycles.

NOTE

For Research Use Only. Not for diagnostic, therapeutics, prophylactic or in vivo use.